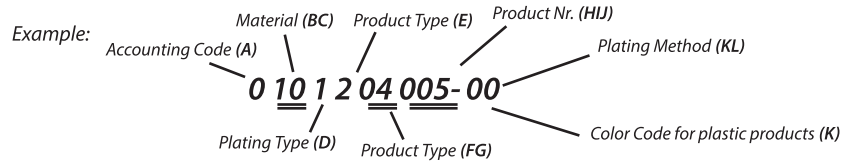


## The explanations of the digits are shown below

### KEY PRODUCT CODES

The products codes are expressed by a 10-digit number as shown in the example below. The explanations of the digits are shown below.



### EXPLANATIONS

**A- Accounting Department Code:** Code for our accounting department.

#### BC- Material:

- 10- Brass (CuZn30)
- 11- Brass (CuZn36)
- 12- Brass (CuZn37)
- 20- Copper (E-Cu)
- 21- CuNiSi
- 22- CuFe
- 25- German Silver (CuNiZn)
- 30- Phospor Bronze (CuSn6)
- 31- Phospor Bronze (CuSn4)
- 32- Phospor Bronze+Stainless Steel (CuSn4+X10CrNi)
- 33- Phospor Bronze+Stainless Steel (CuSn6+X10CrNi)
- 34- CuSn0,1
- 41- Stainless Steel (X5CrNi)
- 50- DC
- 70- Plastic (PA6.6)-Flammability Class V2
- 72- Plastik (PVC)
- 73- Plastik (PE-I 20)
- 78- Plastic (PA6)-Flammability Class V2 V2-NF
- 79- PBT
- 83- PA6.6 (GF) %20
- 84- PA6.6 (GF) %13
- 90- PA6.6 (GF) %50
- 93- PPS (GF) %65

#### FG- Product Type:

- 01- Faston Type Tabs
- 02- Tubular Type Plug Terminals
- 03- Special Faston Tabs
- 04- Faston Type Terminals
- 05- Tubular Type Sockets
- 06- Special Type Terminals
- 07- Ring Terminal
- 08- Spade Tongue Terminal
- 09- Ring Tongue Terminal
- 10- End Splices
- 11- Splices with Insulation Barrel
- 12- Hat-Mate
- 40- Terminal Housing (Male)
- 41- Terminal Housing (Female)
- 42- Terminal Sleeves
- 43- Sleeved Faston Tabs
- 44- PCB Connector
- 80- Other Product

#### D- Plating Type:

- 0-Unplated
- 1- Tin Plated Bright
- 2- Nickel Plated
- 3- Silver Plated
- 4- Copper+Nickel Plated
- 5- Copper Plated
- 6- Tin Plated Matte
- 7- Other
- 8- Nickel+Tin Plated Bright
- 9- Nickel+Tin Plated Matte

#### KL- Plating Method:

- 00- Pre-Tin

#### K- Color Code (For Plastics)

- 0- Natural
- 1- White
- 2- Black
- 3- Red
- 4- Yellow
- 5- Green
- 6- Blue
- 7- Grey
- 8- Brown
- 9- Purple
- 10- Orange
- 11- Copper Tone

#### E- Product Type:

- 1- Reel
- 2- Single
- 3- Semi-finished Product
- 4- Reverse Winding

#### HIJ Product Number:

- 001
- 002
- 003
- ....
- ....

### KEY TO TERMINAL DESCRIPTION

Terminals are described as shown in the example below. The explanations of the digits are shown below.

Example: For 6.3 Faston type receptacles:

#### Explanations:

(A) - Nominal value for female terminals

| NOMINAL VALUE FOR FEMALE TERMINALS |      |      |        |
|------------------------------------|------|------|--------|
| CODE                               | NOM. | MALE | FEMALE |
| (A)                                | 0.50 | 0.50 | 0.40   |
| (B)                                | 0.80 | 0.80 | 0.70   |
| (C)                                | 0.55 | 0.80 | 0.55   |
| (D)                                | 0.30 | 0.40 | 0.30   |
| (E)                                | 0.60 | 0.80 | 0.60   |
| (F)                                | 0.70 | 0.80 | 0.70   |
| (G)                                | 0.75 | 0.85 | 0.75   |
| (H)                                | 0.65 | 0.80 | 0.65   |
| (S)                                | 0.80 | 0.85 | 0.80   |
| (N)                                | 0.25 | 0.50 | 0.25   |
| (P)                                | 0.50 | 0.50 | 0.50   |
| (J)                                | 0.90 | 1.0  | 0.90   |

(6.3) - The value in paranthesis is; Tab width for faston terminals (mm)  
Nominal value for faston type receptacles (mm)

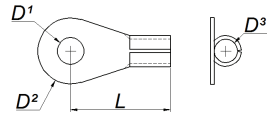


**D- Product Type:** D-Single R-Reel Y-Semi-finished Product

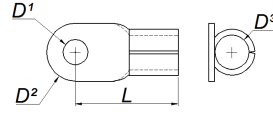
**P- Material:** P-Brass B-Copper M-Stainless-finished Product  
F- Phosphor Bronze C-DC A-German Silver D-CuFe

**K- Plating Type:** K- Tin Plated N-Nickel Plated  
G-Silver Plated Z-Zinc Plated B-Copper Plated

## Ring Tongue Terminals



Form A



Form B



| Ürün Adı<br>Product Name | Ürün Kodu<br>Product Code | Malzeme Kalınlığı (mm)<br>Material Thickness (mm) | Kablo Kesiti (mm <sup>2</sup> )<br>Wire Size (mm <sup>2</sup> ) | Form | D <sup>1</sup> (mm) | D <sup>2</sup> (mm) | D <sup>3</sup> (mm) | L (mm) | Malzeme / Material |      | Adet / SPQ<br>Dökme / Loose |
|--------------------------|---------------------------|---|---|------|---------------------|---------------------|---------------------|--------|--------------------|------|-----------------------------|
|                          |                           |   |   |      |                     |                     |                     |        | E-Cu               | CuZn |                             |
| BK2,5-03                 | 0XXXX09023                | 0,40  | 1,00-2,50   | A    | Ø3,20               | Ø8,00               | Ø2,30               | 12,00  | *                  | ●    | 20.000                      |
| BK2,5-04                 | 0XXXX09001                | 0,40  | 1,00-2,50   | A    | Ø4,20               | Ø8,00               | Ø2,30               | 12,00  | *                  | ●    | 20.000                      |
| BK6-06                   | 0XXXX09008                | 0,70  | 2,50-4,00   | A    | Ø6,40               | Ø13,10              | Ø3,10               | 19,00  | ●                  | *    | 1.000                       |
| BK4-04                   | 0XXXX09007                | 0,50  | 2,50-6,00   | A    | Ø4,20               | Ø10,30              | Ø3,80               | 15,50  | -                  | ●    | 10.000                      |
| BK4-05                   | 0XXXX09002                | 0,50  | 2,50-6,00   | A    | Ø5,20               | Ø10,30              | Ø3,80               | 15,50  | -                  | ●    | 10.000                      |
| BK4-06                   | 0XXXX09003                | 0,50  | 2,50-6,00   | A    | Ø6,40               | Ø10,30              | Ø3,80               | 15,50  | -                  | ●    | 10.000                      |
| BK6-5                    | 0XXXX09024                | 1,00  | 2,50-6,00   | A    | Ø5,20               | Ø11,40              | Ø4,00               | 16,00  | ●                  | *    | 500                         |
| BK6-6                    | 0XXXX09011                | 1,00  | 2,50-6,00   | A    | Ø6,40               | Ø11,40              | Ø4,00               | 16,00  | ●                  | *    | 500                         |
| BK8-6                    | 0XXXX09012                | 1,00  | 2,50-6,00   | A    | Ø8,30               | Ø14,20              | Ø4,00               | 19,00  | ●                  | *    | 500                         |
| BK8-10                   | 0XXXX09013                | 1,00  | 6,00-10,0   | A    | Ø8,40               | Ø18,00              | Ø5,10               | 21,00  | ●                  | *    | 500                         |
| BK10-10                  | 0XXXX09015                | 1,00  | 6,00-10,0   | A    | Ø10,40              | Ø18,20              | Ø5,00               | 21,00  | ●                  | *    | 1.000                       |
| BK10                     | 0XXXX09014                | 1,00  | 6,00-10,0   | A    | Ø8,40               | Ø16,20              | Ø5,00               | 26,00  | ●                  | *    | 100                         |
| BK16                     | 0XXXX09022                | 1,00  | 10,0-16,0   | A    | Ø8,40               | Ø17,70              | Ø5,80               | 29,00  | ●                  | *    | 100                         |
| BK25                     | 0XXXX09016                | 1,00  | 16,0-25,0   | A    | Ø8,40               | Ø21,70              | Ø7,40               | 32,00  | ●                  | *    | 100                         |
| BK6-35                   | 0XXXX09004                | 1,50  | 25,0-35,0   | B    | Ø6,50               | Ø15,20              | Ø9,00               | 26,50  | ●                  | *    | 500                         |
| BK8-35                   | 0XXXX09005                | 1,50  | 25,0-35,0   | A    | Ø8,40               | Ø16,20              | Ø9,00               | 26,00  | ●                  | ●    | 500                         |
| BK35                     | 0XXXX09017                | 1,40  | 25,0-35,0   | A    | Ø10,20              | Ø23,00              | Ø8,20               | 35,50  | ●                  | *    | 50                          |
| BK10-35                  | 0XXXX09006                | 1,50  | 25,0-35,0   | A    | Ø10,50              | Ø18,30              | Ø9,00               | 27,50  | ●                  | ●    | 500                         |
| BK10-50                  | 0XXXX09021                | 1,50  | 35,0-50,0   | B    | Ø10,45              | 19,90               | Ø9,80               | 38,70  | ●                  | *    | 500                         |
| BK50                     | 0XXXX09020                | 1,90  | 35,0-50,0   | A    | Ø10,40              | Ø27,00              | Ø10,20              | 44,00  | ●                  | *    | 25                          |
| BK70                     | 0XXXX09018                | 1,90  | 50,0-70,0   | A    | Ø10,30              | Ø31,50              | Ø13,50              | 51,00  | ●                  | *    | 25                          |

- Standard Part
- \* Available on request

| Kaplama / Plating |    |    |
|-------------------|----|----|
| Sn                | Ni | Ag |
| ✓                 | ✓  | ✓  |