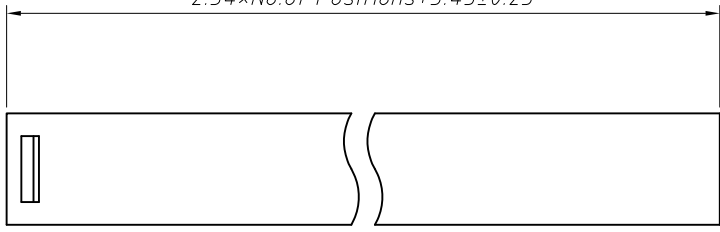


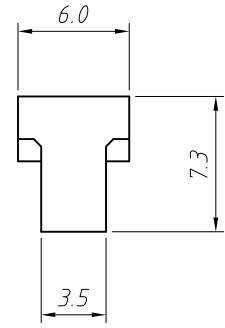
1
RoHS Compliance

2 $2.54 \times \text{No. of Positions} + 5.45 \pm 0.25$



Material:
Housing: PBT, UL 94V-0
Contacts: Brass
Plating: Au or Sn over 50u" nickel

Electrical Characteristics:
Current Rating: 3.0 AMP
Withstand Voltage: 1000V AC
Insulator Resistance: 1000M Ohm min
Contact Resistance: 20m Ohm max.
Operating Temperature: -40°C ~ +105°C
Max. Processing Temp: 180°C for 30-60 seconds
(200°C for 10 seconds)



B

C

D

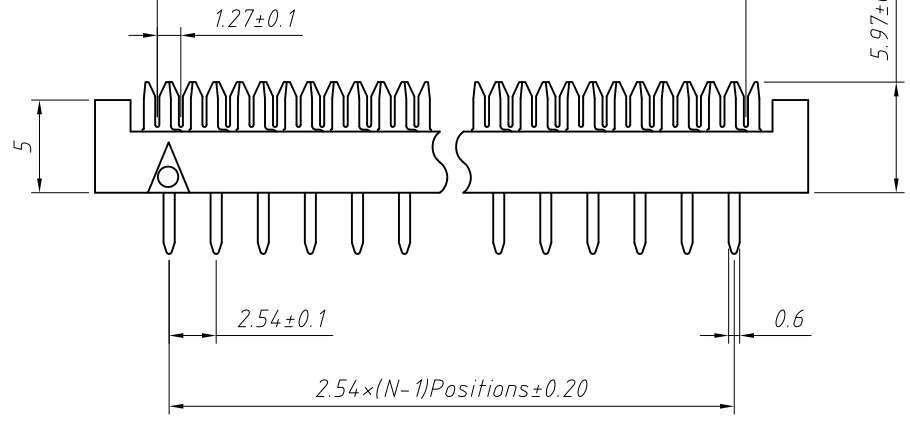
E

F

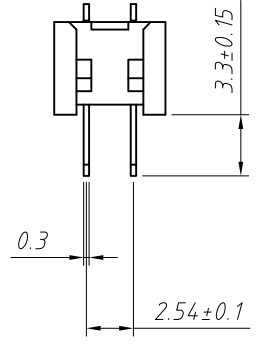
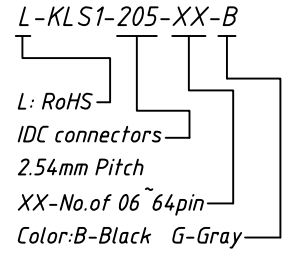
G

H

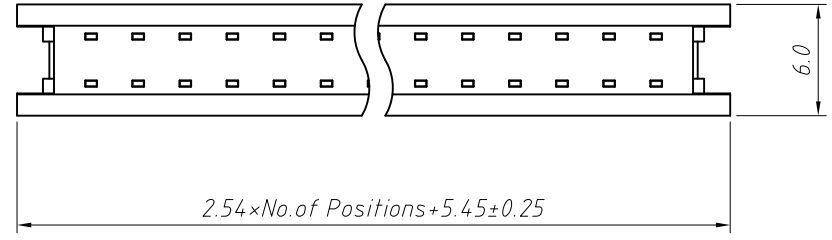
3 $1.27 \times \text{No. of Positions} - 1.27 \pm 0.20$



Order Information:



4 $2.54 \times \text{No. of Positions} + 5.45 \pm 0.25$



ANGLE TOLERANCE	PROJECTION	Description:	
±3°		2.54mm Pitch Dip Plug Connector	
GENERAL TOLERANCE	UNITS	mm	KLS P/N:
x.x ±0.30	SHEET SIZE	A4	L-KLS1-205-XX-B
x.xx ±0.20	Draw:	Daniel	2018-07-10
x.xxx ±0.10	Check:	Daniel	2018-07-10

