



## TS1243 4 pin tact switch



### Product Description

#### TS1243 4 pin tact switch

Life:  $\geq 100,000$  cycles.

Contact Resistance:  $\leq 50\text{m}\Omega$

Insulating Resistance:  $\geq 100\text{M}\Omega$

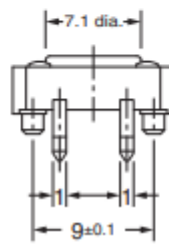
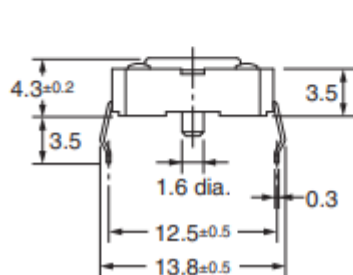
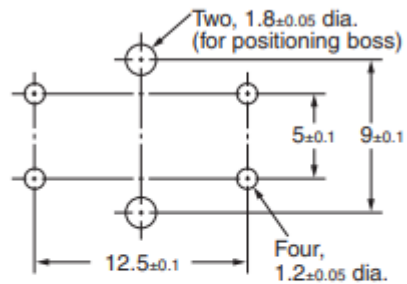
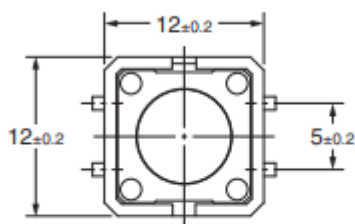
Operating Force: 130/180/250/320+50/-50gf

Withstand Voltage: AC250V 1min

Rating: DC12V 50mA

Operating Temperature:  $-20\sim 70^{\circ}\text{C}$

#### PCB Processing Dimensions (Reference Only) (Top View) (PCB thickness, $t=1.6$ )



#### Terminal Arrangement/ Internal Connections (Top View)

