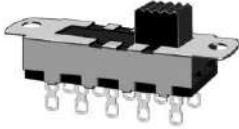


Q-9407

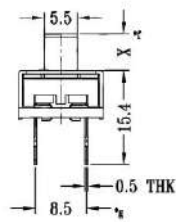
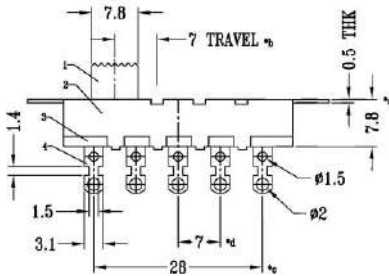
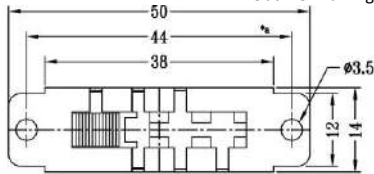
TYPE: **SS-24N01**



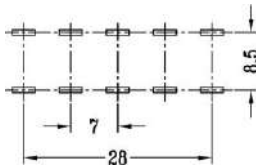
SPECIFICATIONS

Contact Type	DP4T
Pin Width	7mm
Rating	AC 250V, 3A
Contacts Resistance	30mΩ
Insulation Resistance	100MΩ
Minimum Load	DC 500V
Dielectric Strengths	AC 500V / 1 minute
Life Test	10 000 cycles/ minute
Material	Plastic & Metal

Outline Drawing



Mounting



Circuitry

