

Tact Switch

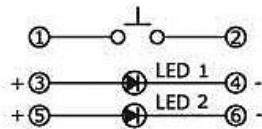
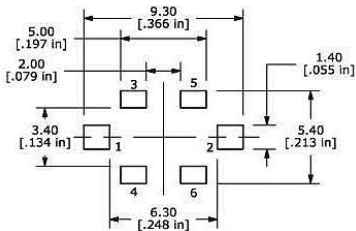
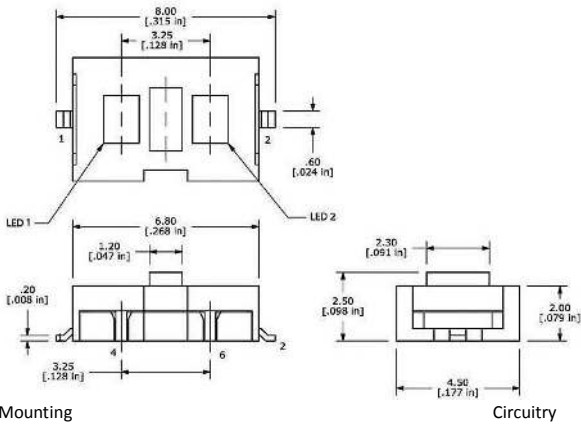
Q-9961

TYPE: **TL3200**

SPECIFICATIONS

Contact Type	SPST
Rating	DC 12V, 50mA
Contacts Resistance	50mΩ max
Insulation Resistance	≥100MΩ Min
Dielectric Strengths	AC 250V / 1 minute
Life Test	30 000 Cycles Min
Operating temperature range	-25°C to +85°C
Operating Force	160+75/-30gf

Outline Drawing



OFF – (ON)