



TSFTP1273 12*12 SMD/SMT Tact Switch



[Inquire](#)

[Download](#)

Product Description

TSFTP1273 12*12 SMD/SMT Tact Switch

Life: $\geq 100,000$ cycles.

Contact Resistance: $\leq 50m\Omega$

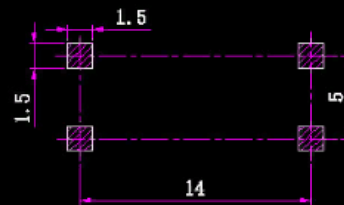
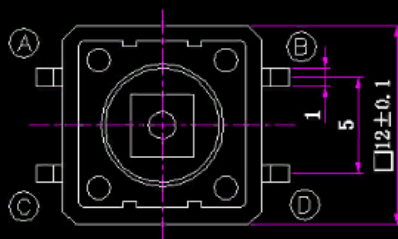
Insulation Resistance: $\geq 100M\Omega$

Operating Force: 130/180/250/320+50/-50gf

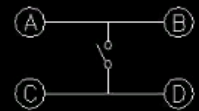
Withstand Voltage: AC250V 1min

Rating: DC12V 50mA

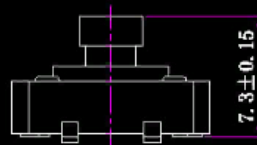
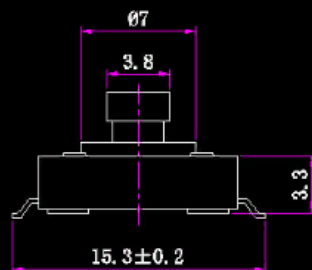
Operating Temperature: -20~70°C



印制线路板
Recommended P.C.B layout



电路简图
SCHEMATIC



插头颜色
黑色
黄色