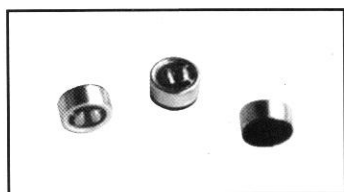


# Electret Condenser Microphone

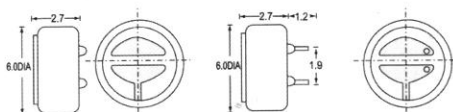
## KPCM - 27B , KPCM - 27B - P(6.0X2.7)

UNIT:mm



### Dimensions

Lead Wire Type KPCM - 27B PCB Type KPCM - 27B - P

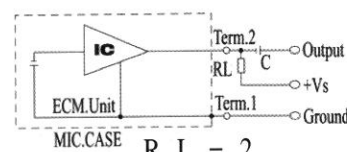


### Specifications

Sensitivity	:See Model No. Table
Impedance	:2.2K $\Omega$ Max
Standard Power Supply	:2.0V DC
Current Consumption	:0.5mA Max
Sensitivity Reduction	:within-3dB at 1.0V
S/N Ratio	:more than 60dB
Directivity	:Omnidirectional

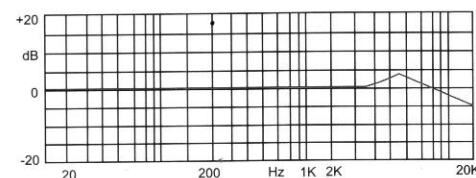
Sensitivity (0dB=1v/ub at 1kHz)	Sensitivity show method
-70 $\pm$ 2dB	As 1 pa=10ub, therefore when it be pa or ub showed, there would be -20ub distance between them.
-68 $\pm$ 2dB	
-66 $\pm$ 2dB	
-64 $\pm$ 2dB	For examples:
-62 $\pm$ 2dB	-40dB(0dB=1v/pa)is equivalent to
-60 $\pm$ 2dB	-60dB(0dB=1v/ub)
-58 $\pm$ 2dB	

### Schematic



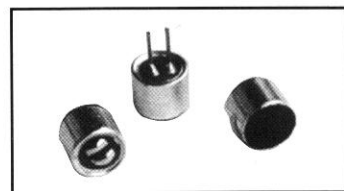
$R_L = 2.2K \Omega$   
 $V_s = 2V$

### Frequency Response



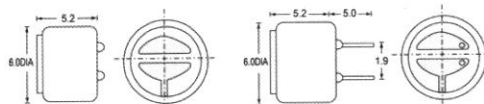
## KPCM - 6B , KPCM - 6B- P(6.0X5.2)

UNIT:mm



### Dimensions

Lead Wire Type KPCM - 6B PCB Type KPCM - 6B-P

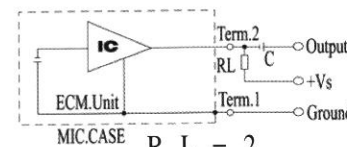


### Specifications

Sensitivity	:See Model No. Table
Impedance	:2.2K $\Omega$ Max
Standard Power Supply	:2.0V DC
Current Consumption	:0.5mA Max
Sensitivity Reduction	:within-3dB at 1.0V
S/N Ratio	:more than 60dB
Directivity	:Omnidirectional

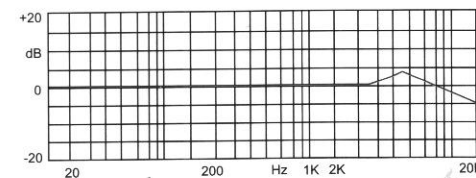
Sensitivity (0dB=1v/ub at 1kHz)	Sensitivity show method
-70 $\pm$ 2dB	As 1 pa=10ub, therefore when it be pa or ub showed, there would be -20ub distance between them.
-68 $\pm$ 2dB	
-66 $\pm$ 2dB	
-64 $\pm$ 2dB	For examples:
-62 $\pm$ 2dB	-40dB(0dB=1v/pa)is equivalent to
-60 $\pm$ 2dB	-60dB(0dB=1v/ub)
-58 $\pm$ 2dB	

### Schematic



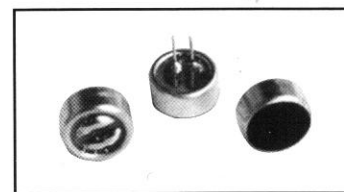
$R_L = 2.2K \Omega$   
 $V_s = 2V$

### Frequency Response



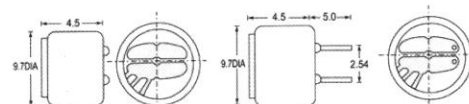
## KPCM - 29B , KPCM - 29B - P(9.7X4.5)

UNIT:mm



### Dimensions

Lead Wire Type KPCM - 29B PCB Type KPCM - 29B - P

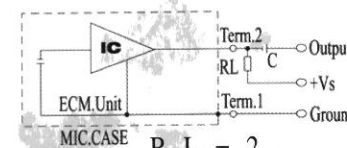


### Specifications

Sensitivity	:See Model No. Table
Impedance	:2.2K $\Omega$ Max
Standard Power Supply	:4.5V DC
Current Consumption	:0.5mA Max
Sensitivity Reduction	:within-3dB at 3V
S/N Ratio	:more than 60dB
Directivity	:Omnidirectional

Sensitivity (0dB=1v/ub at 1kHz)	Sensitivity show method
-66 $\pm$ 2dB	As 1 pa=10ub, therefore when it be pa or ub showed, there would be -20ub distance between them.
-64 $\pm$ 2dB	
-62 $\pm$ 2dB	For examples:
-60 $\pm$ 2dB	-40dB(0dB=1v/pa)is equivalent to
-58 $\pm$ 2dB	-60dB(0dB=1v/ub)
-56 $\pm$ 2dB	

### Schematic



$R_L = 2.2K \Omega$   
 $V_s = 4.5V$

### Frequency Response

