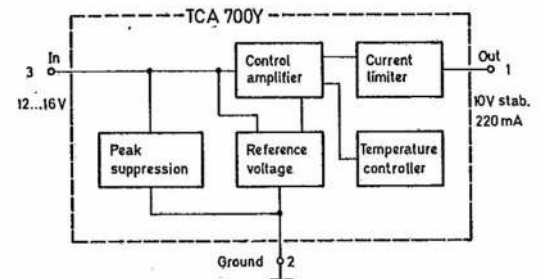


Интегральный регулятор напряжения TCA700Y

TCA700Y 10 V Car Voltage Regulator (Plastic Package TO-202/1)

Monolithic integrated voltage regulator in bipolar technology, especially designed for stabilized power supplies of car instrumentation in cars with 12 V accumulators. This IC features narrow tolerance on output voltage, a low temperature coefficient and is equipped with an automatic current limiter and a thermal overload protection which prevents destruction of the IC in case of accidental overloads, for example short-circuits.

A sufficiently large cooling fin must be provided, to ensure that under normal working conditions the max. permissible junction temperature is not exceeded, and the thermal overload protection does not operate.



TCA700Y Block Diagram