

# LM2931 Series

## Low Dropout Voltage Regulators

The LM2931 series consists of positive fixed and adjustable output voltage regulators that are specifically designed to maintain proper regulation with an extremely low input-to-output voltage differential. These devices are capable of supplying output currents in excess of 100 mA and feature a low bias current of 0.4 mA at 10 mA output.

Designed primarily to survive in the harsh automotive environment, these devices will protect all external load circuitry from input fault conditions caused by reverse battery connection, two battery jump starts, and excessive line transients during load dump. This series also includes internal current limiting, thermal shutdown, and additionally, is able to withstand temporary power-up with mirror-image insertion.

Due to the low dropout voltage and bias current specifications, the LM2931 series is ideally suited for battery powered industrial and consumer equipment where an extension of useful battery life is desirable. The 'C' suffix adjustable output regulators feature an output inhibit pin which is extremely useful in microprocessor-based systems.

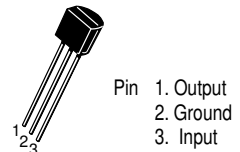
- Input-to-Output Voltage Differential of  $< 0.6\text{ V @ }100\text{ mA}$
- Output Current in Excess of 100 mA
- Low Bias Current
- 60 V Load Dump Protection
- -50 V Reverse Transient Protection
- Internal Current Limiting with Thermal Shutdown
- Temporary Mirror-Image Protection
- Ideally Suited for Battery Powered Equipment
- Economical 5-Lead TO-220 Package with Two Optional Leadforms
- Available in Surface Mount SOP-8, D<sup>2</sup>PAK and DPAK Packages
- High Accuracy ( $\pm 2\%$ ) Reference (LM2931AC) Available

(See Following Page for Ordering Information.)

### LOW DROPOUT VOLTAGE REGULATORS

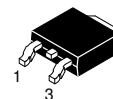
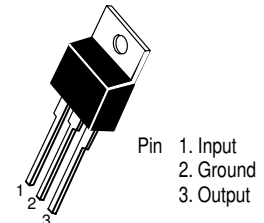
#### FIXED OUTPUT VOLTAGE

**Z SUFFIX**  
PLASTIC PACKAGE  
CASE 29

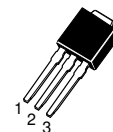


**T SUFFIX**  
PLASTIC PACKAGE  
CASE 221A

Heatsink surface  
connected to Pin 2.

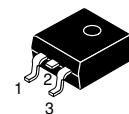


**DT SUFFIX**  
PLASTIC PACKAGE  
CASE 369A  
(DPAK)

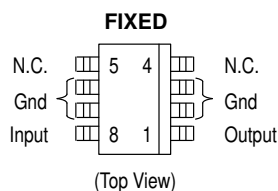


**DT-1 SUFFIX**  
PLASTIC PACKAGE  
CASE 369  
(DPAK)

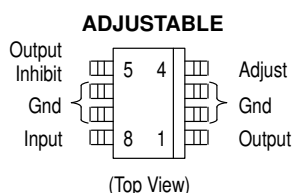
**D2T SUFFIX**  
PLASTIC PACKAGE  
CASE 936  
(D<sup>2</sup>PAK)



Heatsink surface (shown as terminal 4 in case outline drawing) is connected to Pin 2.

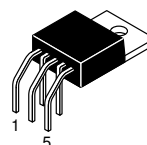


**D SUFFIX**  
PLASTIC PACKAGE  
CASE 751  
(SOP-8)



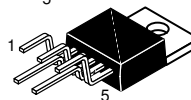
#### ADJUSTABLE OUTPUT VOLTAGE

**TH SUFFIX**  
PLASTIC PACKAGE  
CASE 314A

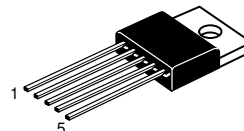


Pin 1. Adjust  
2. Output Inhibit  
3. Ground  
4. Input  
5. Output

**TV SUFFIX**  
PLASTIC PACKAGE  
CASE 314B



**T SUFFIX**  
PLASTIC PACKAGE  
CASE 314D



Heatsink surface connected to Pin 3.

**D2T SUFFIX**  
PLASTIC PACKAGE  
CASE 936A  
(D<sup>2</sup>PAK)

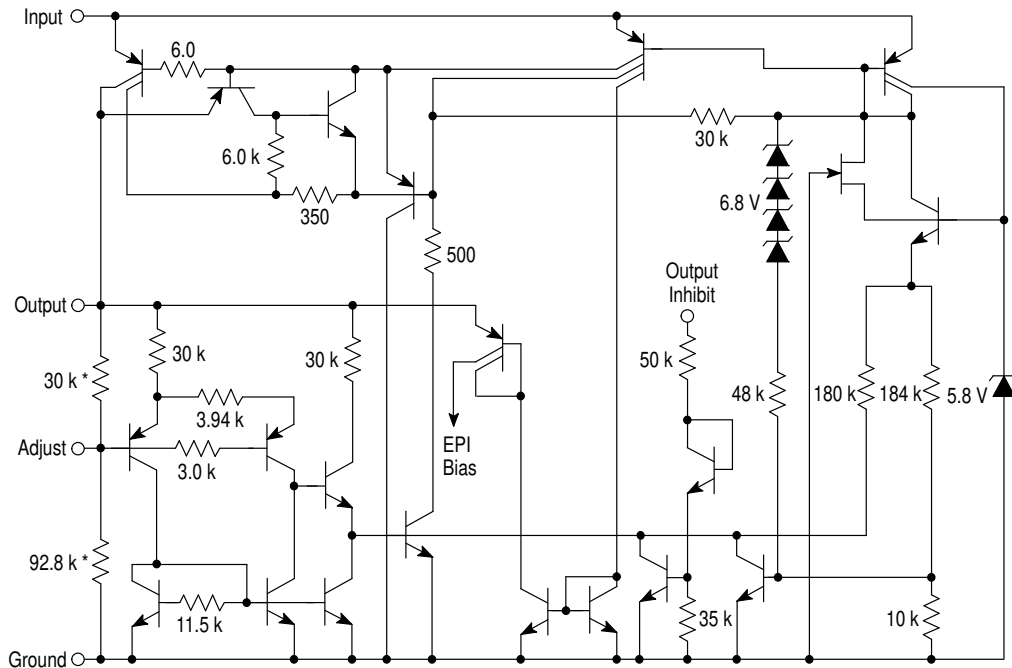
Heatsink surface (shown as terminal 6 in case outline drawing) is connected to Pin 3.

# LM2931 Series

## ORDERING INFORMATION

| Device          | Output     |                         | Case       | Package                          |                                  |
|-----------------|------------|-------------------------|------------|----------------------------------|----------------------------------|
|                 | Voltage    | Tolerance               |            |                                  |                                  |
| LM2931AD-5.0    | 5.0 V      | ±3%                     | 751        | SOP-8 Surface Mount              |                                  |
| LM2931ADT-5.0   |            |                         | 369A       | Surface Mount DPAK               |                                  |
| LM2931ADT-1-5.0 |            |                         | 369        | DPAK                             |                                  |
| LM2931AD2T-5.0  |            |                         | 936        | Surface Mount D <sup>2</sup> PAK |                                  |
| LM2931AT-5.0    |            |                         | 221A       | TO-220 Type                      |                                  |
| LM2931AZ-5.0    |            |                         | 29         | TO-92 Type                       |                                  |
| LM2931D-5.0     |            | ±5.0%                   | 751        | SOP-8 Surface Mount              |                                  |
| LM2931D2T-5.0   |            |                         | 936        | Surface Mount D <sup>2</sup> PAK |                                  |
| LM2931DT-5.0    |            |                         | 369A       | Surface Mount DPAK               |                                  |
| LM2931DT-1-5.0  |            |                         | 369        | DPAK                             |                                  |
| LM2931T-5.0     |            |                         | 221A       | TO-220 Type                      |                                  |
| LM2931Z-5.0     |            |                         | 29         | TO-92 Type                       |                                  |
| LM2931CD        |            |                         | Adjustable | 751                              | SOP-8 Surface Mount              |
| LM2931CD2T      |            |                         |            | 936A                             | Surface Mount D <sup>2</sup> PAK |
| LM2931CT        | 314D       |                         |            | 5-Pin TO-220 Type                |                                  |
| LM2931CTH       | 314A       |                         |            | 5-Pin Horizontal Leadform        |                                  |
| LM2931CTV       | 314B       | 5-Pin Vertical Leadform |            |                                  |                                  |
| LM2931ACD       | Adjustable | ±2.0%                   | 751        | SOP-8 Surface Mount              |                                  |
| LM2931ACD2T     |            |                         | 936A       | Surface Mount D <sup>2</sup> PAK |                                  |
| LM2931ACT       |            |                         | 314D       | 5-Pin TO-220 Type                |                                  |
| LM2931ACTH      |            |                         | 314A       | 5-Pin Horizontal Leadform        |                                  |
| LM2931ACTV      |            |                         | 314B       | 5-Pin Vertical Leadform          |                                  |

## Representative Schematic Diagram



\*Deleted on Adjustable Regulators

This device contains 26 active transistors.

# LM2931 Series

## MAXIMUM RATINGS

| Rating   | Symbol                                      | Value                           | Unit  |
|--|---|---------------------------------|---|
| Input Voltage Continuous   | $V_I$                                       | 40                              | Vdc   |
| Transient Input Voltage ( $\tau \leq 100$ ms)  | $V_I(\tau)$                                 | 60                              | Vpk   |
| Transient Reverse Polarity Input Voltage<br>1.0% Duty Cycle, $\tau \leq 100$ ms  | $-V_I(\tau)$                                | -50                             | Vpk   |
| Power Dissipation<br>Case 29 (TO-92 Type)<br>$T_A = 25^\circ\text{C}$<br>Thermal Resistance, Junction-to-Ambient<br>Thermal Resistance, Junction-to-Case       | $P_D$<br>$R_{\theta JA}$<br>$R_{\theta JC}$ | Internally Limited<br>178<br>83 | W<br>$^\circ\text{C/W}$<br>$^\circ\text{C/W}$ |
| Case 221A, 314A, 314B and 314D (TO-220 Type)<br>$T_A = 25^\circ\text{C}$<br>Thermal Resistance, Junction-to-Ambient<br>Thermal Resistance, Junction-to-Case    | $P_D$<br>$R_{\theta JA}$<br>$R_{\theta JC}$ | Internally Limited<br>65<br>5.0 | W<br>$^\circ\text{C/W}$<br>$^\circ\text{C/W}$ |
| Case 369 and 369A (DPAK) [Note 1]<br>$T_A = 25^\circ\text{C}$<br>Thermal Resistance, Junction-to-Ambient<br>Thermal Resistance, Junction-to-Case               | $P_D$<br>$R_{\theta JA}$<br>$R_{\theta JC}$ | Internally Limited<br>92<br>6.0 | W<br>$^\circ\text{C/W}$<br>$^\circ\text{C/W}$ |
| Case 751 (SOP-8) [Note 2]<br>$T_A = 25^\circ\text{C}$<br>Thermal Resistance, Junction-to-Ambient<br>Thermal Resistance, Junction-to-Case                       | $P_D$<br>$R_{\theta JA}$<br>$R_{\theta JC}$ | Internally Limited<br>160<br>25 | W<br>$^\circ\text{C/W}$<br>$^\circ\text{C/W}$ |
| Case 936 and 936A (D <sup>2</sup> PAK) [Note 3]<br>$T_A = 25^\circ\text{C}$<br>Thermal Resistance, Junction-to-Ambient<br>Thermal Resistance, Junction-to-Case | $P_D$<br>$R_{\theta JA}$<br>$R_{\theta JC}$ | Internally Limited<br>70<br>5.0 | W<br>$^\circ\text{C/W}$<br>$^\circ\text{C/W}$ |
| Tested Operating Junction Temperature Range  | $T_J$                                       | -40 to +125                     | $^\circ\text{C}$                              |
| Storage Temperature Range  | $T_{stg}$                                   | -65 to +150                     | $^\circ\text{C}$                              |

- NOTES:** 1. DPAK Junction-to-Ambient Thermal Resistance is for vertical mounting. Refer to Figure 24 for board mounted Thermal Resistance.  
2. SOP-8 Junction-to-Ambient Thermal Resistance is for minimum recommended pad size. Refer to Figure 23 for Thermal Resistance variation versus pad size.  
3. D<sup>2</sup>PAK Junction-to-Ambient Thermal Resistance is for vertical mounting. Refer to Figure 25 for board mounted Thermal Resistance.  
4. ESD data available upon request.

## ELECTRICAL CHARACTERISTICS ( $V_{in} = 14$ V, $I_O = 10$ mA, $C_O = 100$ $\mu\text{F}$ , $C_O(\text{ESR}) = 0.3$ $\Omega$ , $T_J = 25^\circ\text{C}$ [Note 1].)

| Characteristic | Symbol | LM2931-5.0 |     |     | LM2931A-5.0 |     |     | Unit |
|----------------|--------|------------|-----|-----|-------------|-----|-----|------|
|                |        | Min        | Typ | Max | Min         | Typ | Max |      |

### FIXED OUTPUT

|  |                     |      |     |      |      |     |      |                     |
|--|---------------------|------|-----|------|------|-----|------|---------------------|
| Output Voltage<br>$V_{in} = 14$ V, $I_O = 10$ mA, $T_J = 25^\circ\text{C}$<br>$V_{in} = 6.0$ V to 26 V, $I_O \leq 100$ mA, $T_J = -40^\circ$ to $+125^\circ\text{C}$ | $V_O$               | 4.75 | 5.0 | 5.25 | 4.81 | 5.0 | 5.19 | V                   |
| Line Regulation<br>$V_{in} = 9.0$ V to 16 V<br>$V_{in} = 6.0$ V to 26 V  | $\text{Reg}_{line}$ | -    | 2.0 | 10   | -    | 2.0 | 10   | mV                  |
| Load Regulation ( $I_O = 5.0$ mA to 100 mA)  | $\text{Reg}_{load}$ | -    | 14  | 50   | -    | 14  | 50   | mV                  |
| Output Impedance<br>$I_O = 10$ mA, $\Delta I_O = 1.0$ mA, $f = 100$ Hz to 10 kHz   | $Z_O$               | -    | 200 | -    | -    | 200 | -    | $\text{m}\Omega$    |
| Bias Current<br>$V_{in} = 14$ V, $I_O = 100$ mA, $T_J = 25^\circ\text{C}$<br>$V_{in} = 6.0$ V to 26 V, $I_O = 10$ mA, $T_J = -40^\circ$ to $+125^\circ\text{C}$      | $I_B$               | -    | 5.8 | 30   | -    | 5.8 | 30   | mA                  |
| Output Noise Voltage ( $f = 10$ Hz to 100 kHz)   | $V_n$               | -    | 700 | -    | -    | 700 | -    | $\mu\text{V}_{rms}$ |
| Long Term Stability  | S                   | -    | 20  | -    | -    | 20  | -    | mV/kHR              |

- NOTES:** 1. Low duty cycle pulse techniques are used during test to maintain junction temperature as close to ambient as possible.  
2. The reference voltage on the adjustable device is measured from the output to the adjust pin across  $R_1$ .

## LM2931 Series

**ELECTRICAL CHARACTERISTICS** ( $V_{in} = 14\text{ V}$ ,  $I_O = 10\text{ mA}$ ,  $C_O = 100\text{ }\mu\text{F}$ ,  $C_{O(ESR)} = 0.3\text{ }\Omega$ ,  $T_J = 25^\circ\text{C}$  [Note 1].)

| Characteristic   | Symbol       | LM2931-5.0 |               |            | LM2931A-5.0 |               |            | Unit |
|--|--------------|------------|---------------|------------|-------------|---------------|------------|------|
|  |              | Min        | Typ           | Max        | Min         | Typ           | Max        |      |
| <b>FIXED OUTPUT</b>  |              |            |               |            |             |               |            |      |
| Ripple Rejection ( $f = 120\text{ Hz}$ )                               | RR           | 60         | 90            | –          | 60          | 90            | –          | dB   |
| Dropout Voltage<br>$I_O = 10\text{ mA}$<br>$I_O = 100\text{ mA}$       | $V_I - V_O$  | –<br>–     | 0.015<br>0.16 | 0.2<br>0.6 | –<br>–      | 0.015<br>0.16 | 0.2<br>0.6 | V    |
| Over-Voltage Shutdown Threshold  | $V_{th(OV)}$ | 26         | 29.5          | 40         | 26          | 29.5          | 40         | V    |
| Output Voltage with Reverse Polarity Input ( $V_{in} = -15\text{ V}$ ) | $-V_O$       | -0.3       | 0             | –          | -0.3        | 0             | –          | V    |

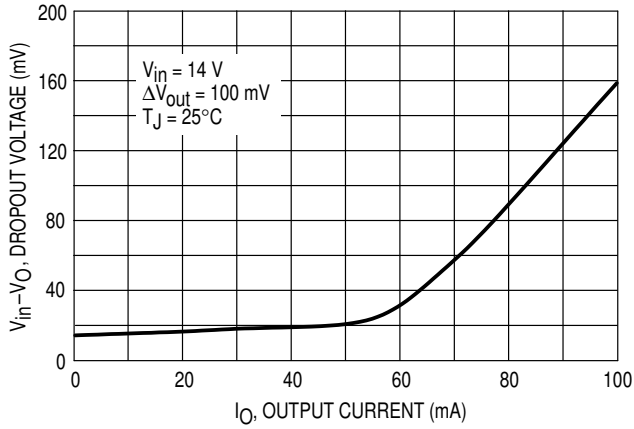
**ELECTRICAL CHARACTERISTICS** ( $V_{in} = 14\text{ V}$ ,  $I_O = 10\text{ mA}$ ,  $C_O = 100\text{ }\mu\text{F}$ ,  $C_{O(ESR)} = 0.3\text{ }\Omega$ ,  $T_J = 25^\circ\text{C}$  [Note 1].)

| Characteristic   | Symbol              | LM2931C                |                        |                        | LM2931AC               |                        |                        | Unit                         |
|--|---------------------|------------------------|------------------------|------------------------|------------------------|------------------------|------------------------|------------------------------|
|  |                     | Min                    | Typ                    | Max                    | Min                    | Typ                    | Typ                    |                              |
| <b>ADJUSTABLE OUTPUT</b>   |                     |                        |                        |                        |                        |                        |                        |                              |
| Reference Voltage (Note 2, Figure 18)<br>$I_O = 10\text{ mA}$ , $T_J = 25^\circ\text{C}$<br>$I_O \leq 100\text{ mA}$ , $T_J = -40\text{ to }+125^\circ\text{C}$  | $V_{ref}$           | 1.14<br>1.08           | 1.20<br>–              | 1.26<br>1.32           | 1.17<br>1.15           | 1.20<br>–              | 1.23<br>1.25           | V                            |
| Output Voltage Range   | $V_{Orange}$        | 3.0 to<br>24           | 2.7 to<br>29.5         | –                      | 3.0 to<br>24           | 2.7 to<br>29.5         | –                      | V                            |
| Line Regulation ( $V_{in} = V_O + 0.6\text{ V to }26\text{ V}$ )   | Reg <sub>line</sub> | –                      | 0.2                    | 1.5                    | –                      | 0.2                    | 1.5                    | mV/V                         |
| Load Regulation ( $I_O = 5.0\text{ mA to }100\text{ mA}$ )   | Reg <sub>load</sub> | –                      | 0.3                    | 1.0                    | –                      | 0.3                    | 1.0                    | %/V                          |
| Output Impedance<br>$I_O = 10\text{ mA}$ , $\Delta I_O = 1.0\text{ mA}$ , $f = 10\text{ Hz to }10\text{ kHz}$  | $Z_O$               | –                      | 40                     | –                      | –                      | 40                     | –                      | m $\Omega$ /V                |
| Bias Current<br>$I_O = 100\text{ mA}$<br>$I_O = 10\text{ mA}$<br>Output Inhibited ( $V_{th(OI)} = 2.5\text{ V}$ )  | $I_B$               | –<br>–<br>–            | 6.0<br>0.4<br>0.2      | –<br>1.0<br>1.0        | –<br>–<br>–            | 6.0<br>0.4<br>0.2      | –<br>1.0<br>1.0        | mA                           |
| Adjustment Pin Current   | $I_{Adj}$           | –                      | 0.2                    | –                      | –                      | 0.2                    | –                      | $\mu\text{A}$                |
| Output Noise Voltage ( $f = 10\text{ Hz to }100\text{ kHz}$ )  | $V_n$               | –                      | 140                    | –                      | –                      | 140                    | –                      | $\mu\text{V}_{rms}/\text{V}$ |
| Long-Term Stability  | S                   | –                      | 0.4                    | –                      | –                      | 0.4                    | –                      | %/kHR                        |
| Ripple Rejection ( $f = 120\text{ Hz}$ )   | RR                  | 0.10                   | 0.003                  | –                      | 0.10                   | 0.003                  | –                      | %/V                          |
| Dropout Voltage<br>$I_O = 10\text{ mA}$<br>$I_O = 100\text{ mA}$   | $V_I - V_O$         | –<br>–                 | 0.015<br>0.16          | 0.2<br>0.6             | –<br>–                 | 0.015<br>0.16          | 0.2<br>0.6             | V                            |
| Over-Voltage Shutdown Threshold  | $V_{th(OV)}$        | 26                     | 29.5                   | 40                     | 26                     | 29.5                   | 40                     | V                            |
| Output Voltage with Reverse Polarity Input ( $V_{in} = -15\text{ V}$ )   | $-V_O$              | -0.3                   | 0                      | –                      | -0.3                   | 0                      | –                      | V                            |
| Output Inhibit Threshold Voltages<br>Output "On": $T_J = 25^\circ\text{C}$<br>$T_J = -40^\circ\text{ to }+125^\circ\text{C}$<br>Output "Off": $T_J = 25^\circ\text{C}$<br>$T_J = -40^\circ\text{ to }+125^\circ\text{C}$ | $V_{th(OI)}$        | –<br>–<br>2.50<br>3.25 | 2.15<br>–<br>2.26<br>– | 1.90<br>1.20<br>–<br>– | –<br>–<br>2.50<br>3.25 | 2.15<br>–<br>2.26<br>– | 1.90<br>1.20<br>–<br>– | V                            |
| Output Inhibit Threshold Current ( $V_{th(OI)} = 2.5\text{ V}$ )   | $I_{th(OI)}$        | –                      | 30                     | 50                     | –                      | 30                     | 50                     | $\mu\text{A}$                |

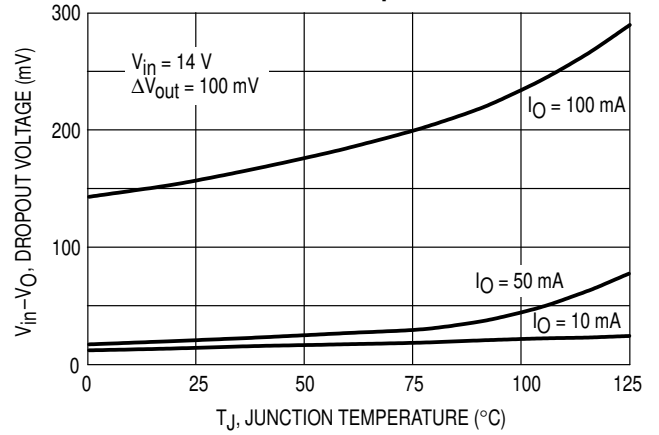
**NOTES:** 1. Low duty cycle pulse techniques are used during test to maintain junction temperature as close to ambient as possible.  
2. The reference voltage on the adjustable device is measured from the output to the adjust pin across  $R_1$ .

# LM2931 Series

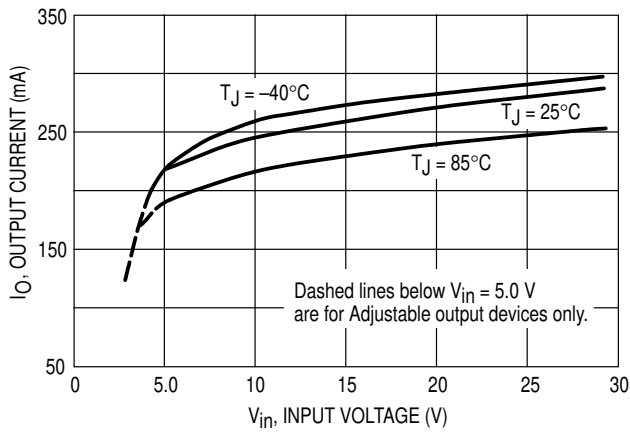
**Figure 1. Dropout Voltage versus Output Current**



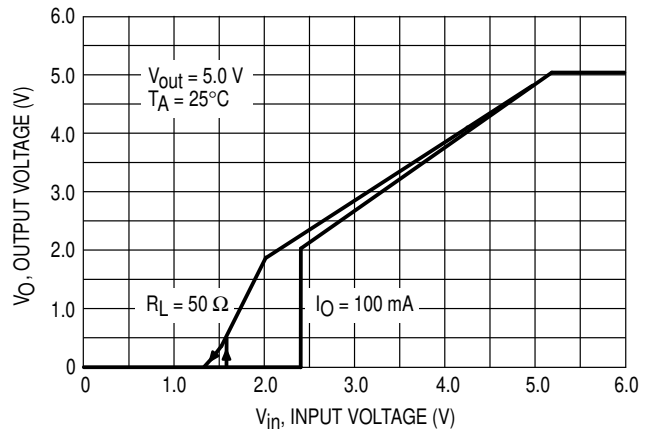
**Figure 2. Dropout Voltage versus Junction Temperature**



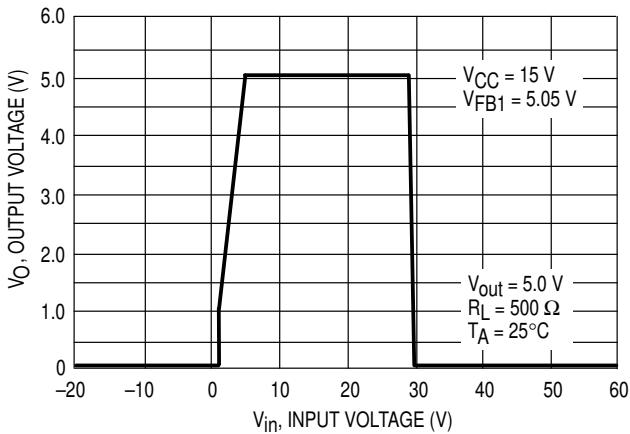
**Figure 3. Peak Output Current versus Input Voltage**



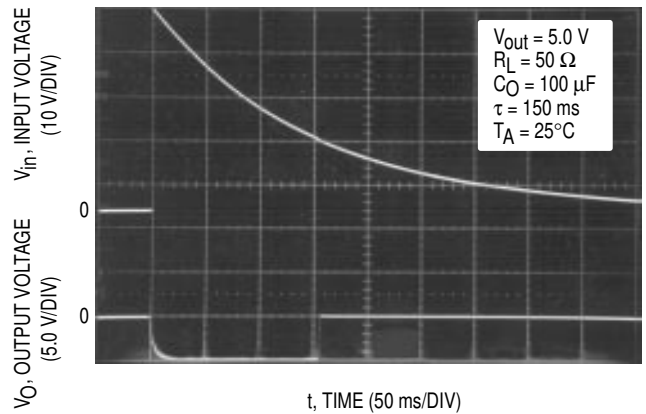
**Figure 4. Output Voltage versus Input Voltage**



**Figure 5. Output Voltage versus Input Voltage**

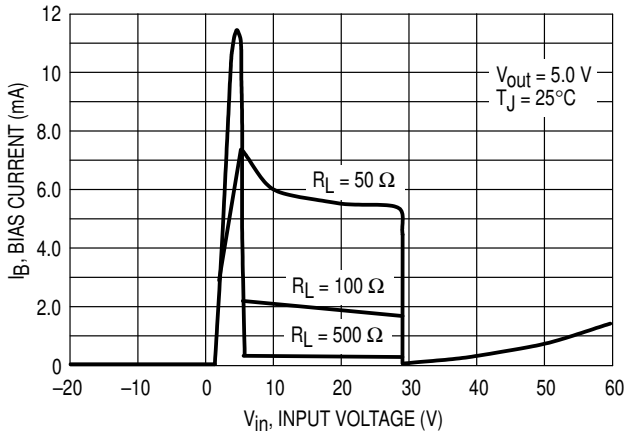


**Figure 6. Load Dump Characteristics**

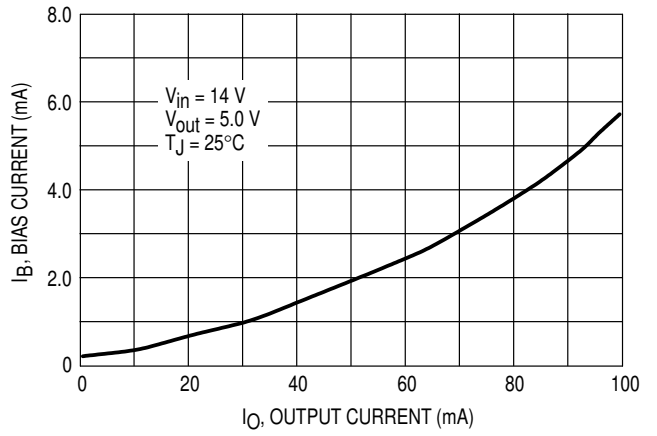


# LM2931 Series

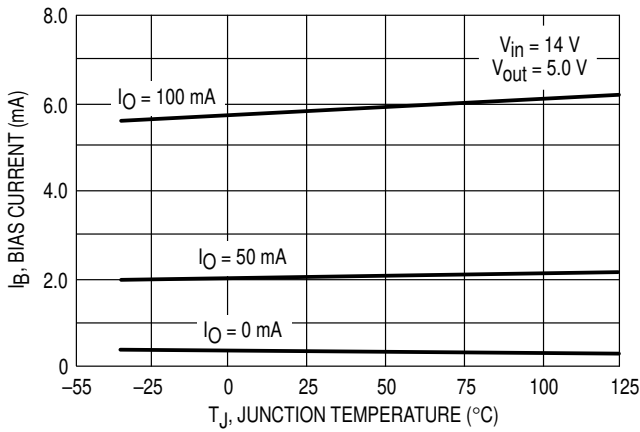
**Figure 7. Bias Current versus Input Voltage**



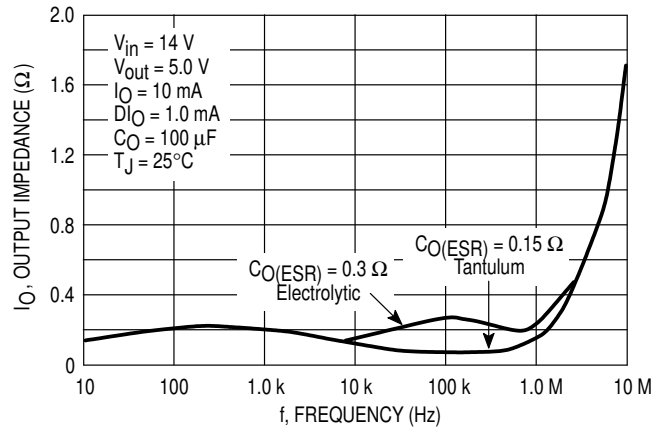
**Figure 8. Bias Current versus Output Current**



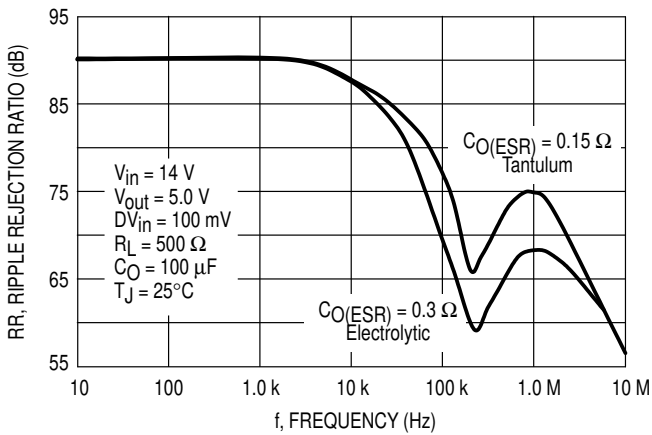
**Figure 9. Bias Current versus Junction Temperature**



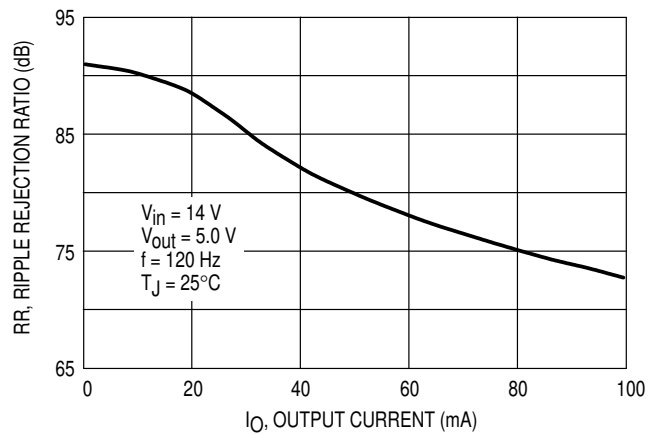
**Figure 10. Output Impedance versus Frequency**



**Figure 11. Ripple Rejection versus Frequency**



**Figure 12. Ripple Rejection versus Output Current**



## LM2931 Series

Figure 13. Line Regulation

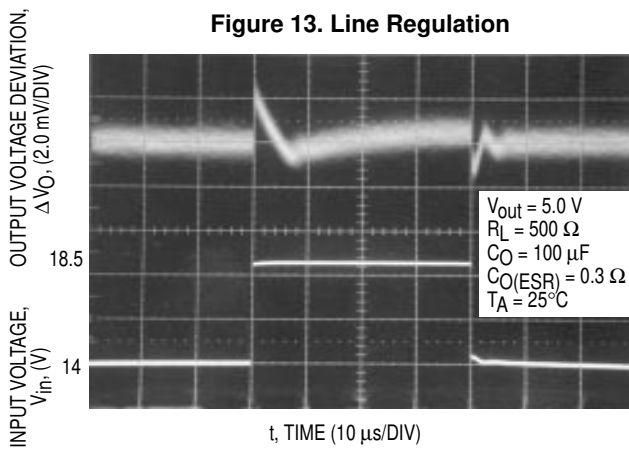


Figure 14. Load Regulation

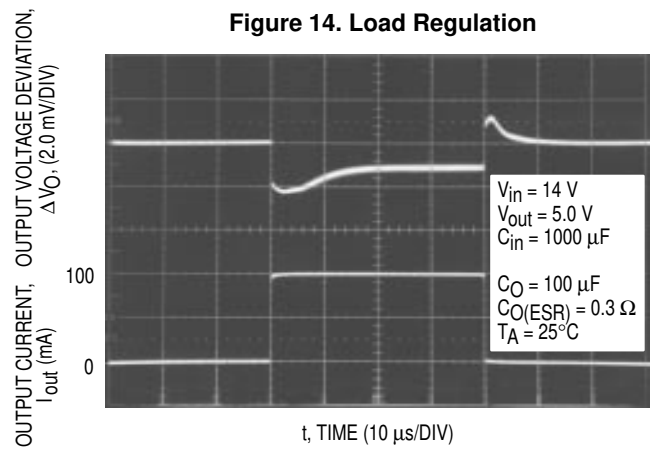


Figure 15. Reference Voltage versus Output Voltage

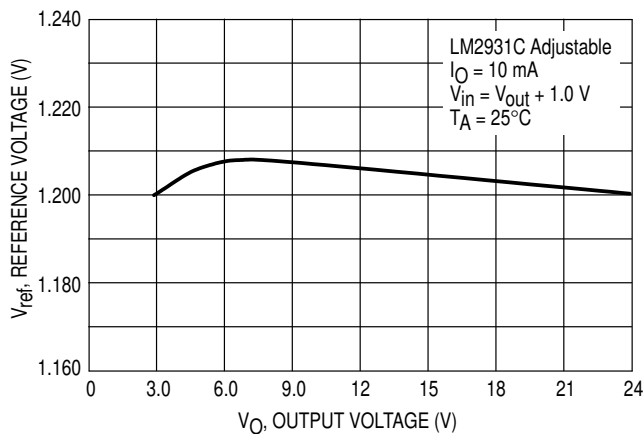
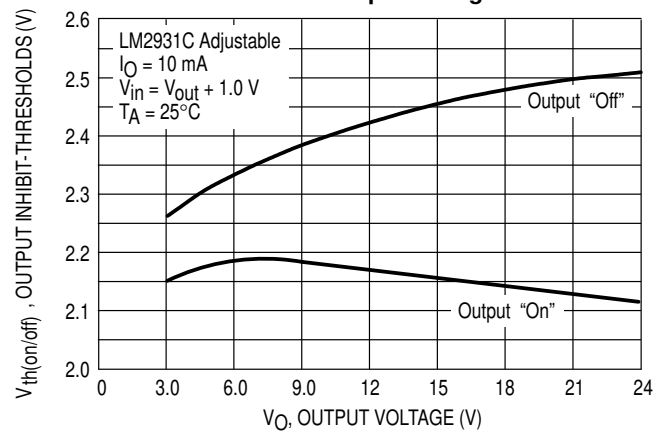


Figure 16. Output Inhibit-Thresholds versus Output Voltage



### APPLICATIONS INFORMATION

The LM2931 series regulators are designed with many protection features making them essentially blow-out proof. These features include internal current limiting, thermal shutdown, overvoltage and reverse polarity input protection, and the capability to withstand temporary power-up with mirror-image insertion. Typical application circuits for the fixed and adjustable output device are shown in Figures 17 and 18.

The input bypass capacitor  $C_{in}$  is recommended if the regulator is located an appreciable distance ( $\geq 4''$ ) from the supply input filter. This will reduce the circuit's sensitivity to the input line impedance at high frequencies.

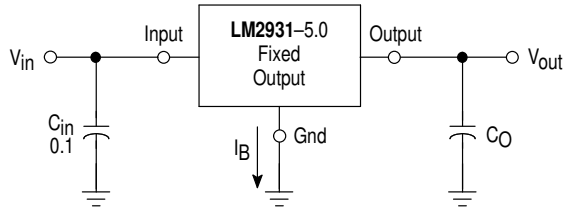
This regulator series is not internally compensated and thus requires an external output capacitor for stability. The capacitance value required is dependent upon the load current, output voltage for the adjustable regulator, and the type of capacitor selected. The least stable condition is encountered at maximum load current and minimum output voltage. Figure 22 shows that for operation in the "Stable" region, under the conditions specified, the magnitude of the output capacitor impedance  $|Z_O|$  must not exceed  $0.4 \Omega$ . This limit must be observed over the entire operating temperature range of the regulator circuit.

With economical electrolytic capacitors, cold temperature operation can pose a serious stability problem. As the electrolyte freezes, around  $-30^\circ\text{C}$ , the capacitance will decrease and the equivalent series resistance (ESR) will increase drastically, causing the circuit to oscillate. Quality electrolytic capacitors with extended temperature ranges of  $-40^\circ$  to  $+85^\circ\text{C}$  and  $-55^\circ$  to  $+105^\circ\text{C}$  are readily available. Solid tantalum capacitors may be a better choice if small size is a requirement, however, the maximum  $|Z_O|$  limit over temperature must be observed.

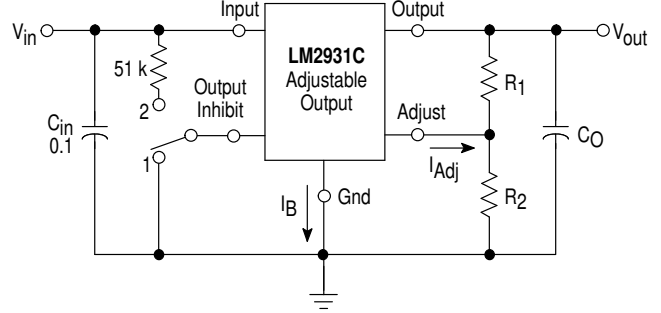
Note that in the stable region, the output noise voltage is linearly proportional to  $|Z_O|$ . In effect,  $C_O$  dictates the high frequency roll-off point of the circuit. Operation in the area titled "Marginally Stable" will cause the output of the regulator to exhibit random bursts of oscillation that decay in an under-damped fashion. Continuous oscillation occurs when operating in the area titled "Unstable". It is suggested that over testing of the entire circuit be performed with maximum load, minimum input voltage, and minimum ambient temperature.

# LM2931 Series

**Figure 17. Fixed Output Regulator**



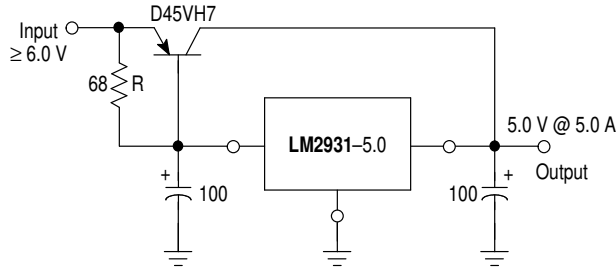
**Figure 18. Adjustable Output Regulator**



Switch Position 1 = Output "On", 2 = Output "Off"

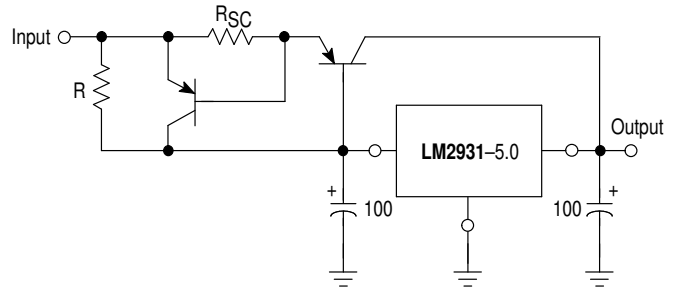
$$V_{out} = V_{ref} \left( 1 + \frac{R_2}{R_1} \right) + I_{Adj} R_2 \quad 22.5 \text{ k} \geq \frac{R_1 R_2}{R_1 + R_2}$$

**Figure 19. (5.0 A) Low Differential Voltage Regulator**



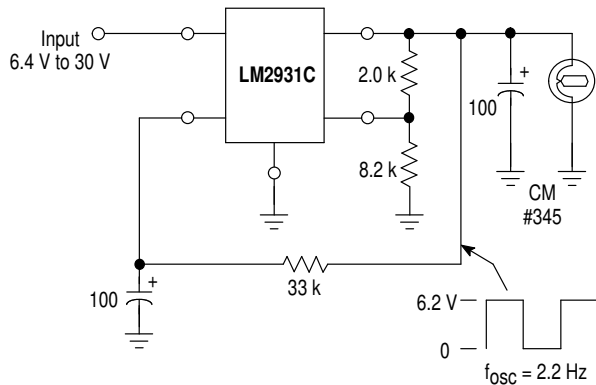
The LM2931 series can be current boosted with a PNP transistor. The D45VH7, on a heatsink, will provide an output current of 5.0 A with an input to output voltage differential of approximately 1.0 V. Resistor R in conjunction with the  $V_{BE}$  of the PNP determines when the pass transistor begins conducting. This circuit is not short circuit proof.

**Figure 20. Current Boost Regulator with Short Circuit Projection**

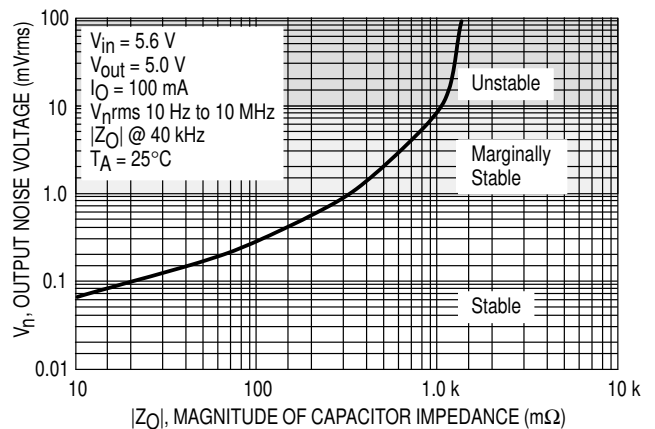


The circuit of Figure 19 can be modified to provide supply protection against short circuits by adding the current sense resistor  $R_{SC}$  and an additional PNP transistor. The current sensing PNP must be capable of handling the short circuit current of the LM2931. Safe operating area of both transistors must be considered under worst case conditions.

**Figure 21. Constant Intensity Lamp Flasher**



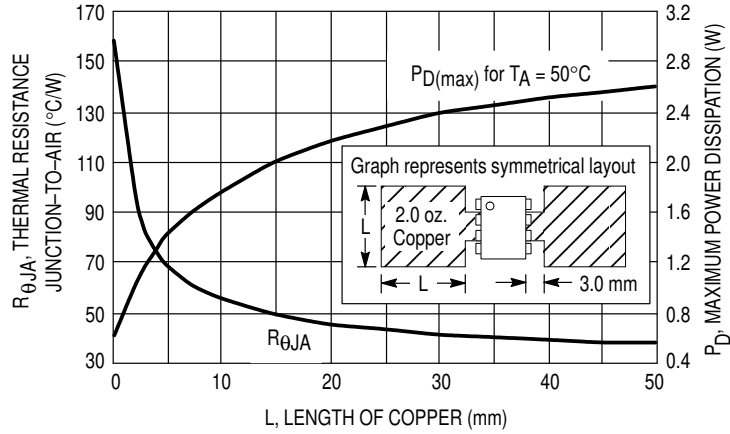
**Figure 22. Output Noise Voltage versus Output Capacitor Impedance**



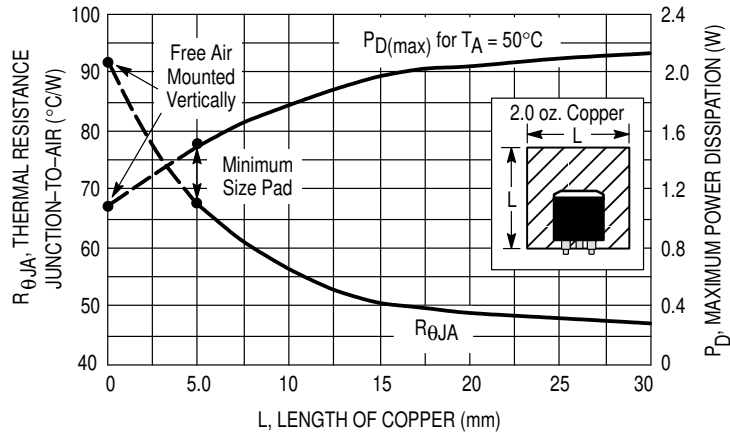


# LM2931 Series

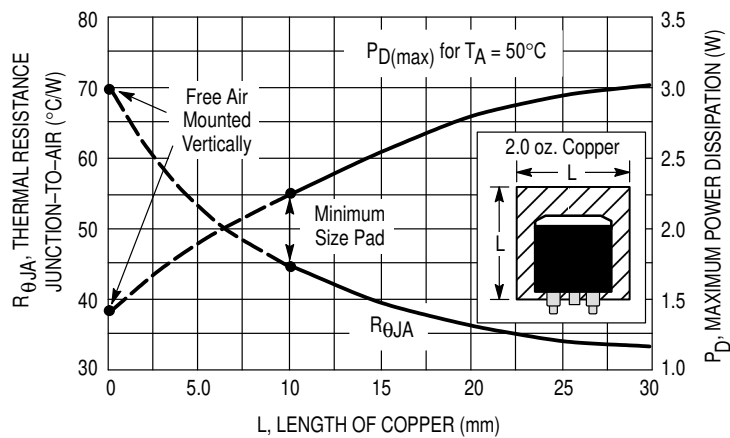
**Figure 23. SOP-8 Thermal Resistance and Maximum Power Dissipation versus P.C.B. Copper Length**



**Figure 24. DPAK Thermal Resistance and Maximum Power Dissipation versus P.C.B. Copper Length**



**Figure 25. 3-Pin and 5-Pin D<sup>2</sup>PAK Thermal Resistance and Maximum Power Dissipation versus P.C.B. Copper Length**



## LM2931 Series

### DEFINITIONS

**Dropout Voltage** – The input/output voltage differential at which the regulator output no longer maintains regulation against further reductions in input voltage. Measured when the output decreases 100 mV from nominal value at 14 V input, dropout voltage is affected by junction temperature and load current.

**Line Regulation** – The change in output voltage for a change in the input voltage. The measurement is made under conditions of low dissipation or by using pulse techniques such that the average chip temperature is not significantly affected.

**Load Regulation** – The change in output voltage for a change in load current at constant chip temperature.

**Maximum Power Dissipation** – The maximum total device dissipation for which the regulator will operate within specifications.

**Bias Current** – That part of the input current that is not delivered to the load.

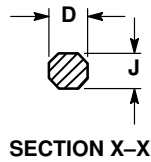
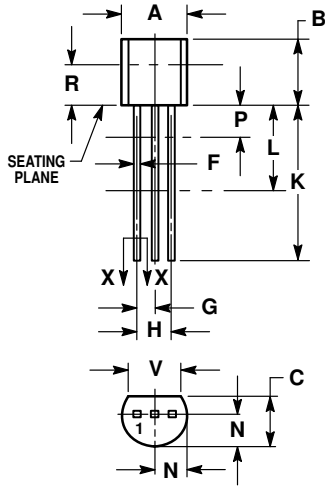
**Output Noise Voltage** – The rms AC voltage at the output, with constant load and no input ripple, measured over a specified frequency range.

**Long-Term Stability** – Output voltage stability under accelerated life test conditions with the maximum rated voltage listed in the devices electrical characteristics and maximum power dissipation.

# LM2931 Series

## OUTLINE DIMENSIONS

### Z SUFFIX PLASTIC PACKAGE CASE 29-04 (TO-92 Type) ISSUE AD

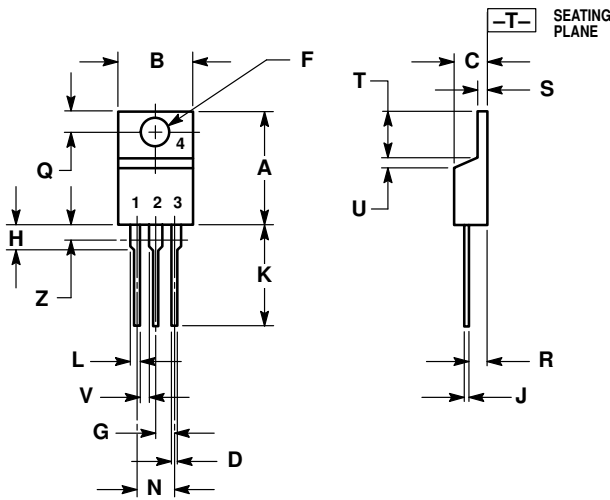


NOTES:

1. DIMENSIONING AND TOLERANCING PER ANSI Y14.5M, 1982.
2. CONTROLLING DIMENSION: INCH.
3. CONTOUR OF PACKAGE BEYOND DIMENSION R IS UNCONTROLLED.
4. DIMENSION F APPLIES BETWEEN P AND L. DIMENSION D AND J APPLY BETWEEN L AND K. MINIMUM LEAD DIMENSION IS UNCONTROLLED IN P AND BEYOND DIMENSION K MINIMUM.

| DIM | INCHES |       | MILLIMETERS |      |
|-----|--------|-------|-------------|------|
|     | MIN    | MAX   | MIN         | MAX  |
| A   | 0.175  | 0.205 | 4.45        | 5.20 |
| B   | 0.170  | 0.210 | 4.32        | 5.33 |
| C   | 0.125  | 0.165 | 3.18        | 4.19 |
| D   | 0.016  | 0.022 | 0.41        | 0.55 |
| F   | 0.016  | 0.019 | 0.41        | 0.48 |
| G   | 0.045  | 0.055 | 1.15        | 1.39 |
| H   | 0.095  | 0.105 | 2.42        | 2.66 |
| J   | 0.015  | 0.020 | 0.39        | 0.50 |
| K   | 0.500  | -     | 12.70       | -    |
| L   | 0.250  | -     | 6.35        | -    |
| N   | 0.080  | 0.105 | 2.04        | 2.66 |
| P   | -      | 0.100 | -           | 2.54 |
| R   | 0.115  | -     | 2.93        | -    |
| V   | 0.135  | -     | 3.43        | -    |

### T SUFFIX PLASTIC PACKAGE CASE 221A-06 (TO-220 Type) ISSUE Y



NOTES:

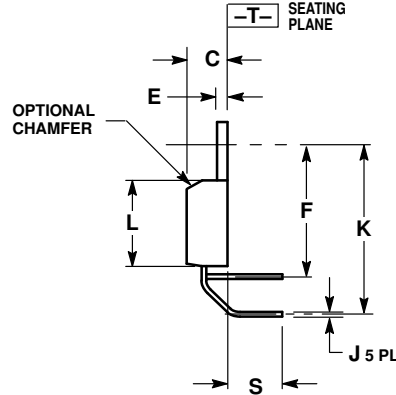
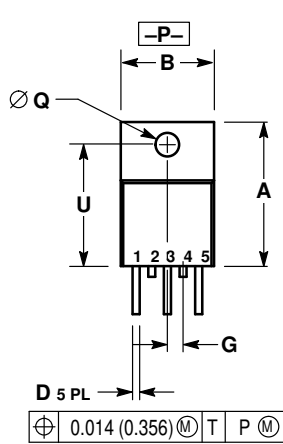
1. DIMENSIONING AND TOLERANCING PER ANSI Y14.5M, 1982.
2. CONTROLLING DIMENSION: INCH.
3. DIM Z DEFINES A ZONE WHERE ALL BODY AND LEAD IRREGULARITIES ARE ALLOWED.

| DIM | INCHES |       | MILLIMETERS |       |
|-----|--------|-------|-------------|-------|
|     | MIN    | MAX   | MIN         | MAX   |
| A   | 0.570  | 0.620 | 14.48       | 15.75 |
| B   | 0.380  | 0.405 | 9.66        | 10.28 |
| C   | 0.160  | 0.190 | 4.07        | 4.82  |
| D   | 0.025  | 0.035 | 0.64        | 0.88  |
| F   | 0.142  | 0.147 | 3.61        | 3.73  |
| G   | 0.095  | 0.105 | 2.42        | 2.66  |
| H   | 0.110  | 0.155 | 2.80        | 3.93  |
| J   | 0.018  | 0.025 | 0.46        | 0.64  |
| K   | 0.500  | 0.562 | 12.70       | 14.27 |
| L   | 0.045  | 0.060 | 1.15        | 1.52  |
| N   | 0.190  | 0.210 | 4.83        | 5.33  |
| Q   | 0.100  | 0.120 | 2.54        | 3.04  |
| R   | 0.080  | 0.110 | 2.04        | 2.79  |
| S   | 0.045  | 0.055 | 1.15        | 1.39  |
| T   | 0.235  | 0.255 | 5.97        | 6.47  |
| U   | 0.000  | 0.050 | 0.00        | 1.27  |
| V   | 0.045  | -     | 1.15        | -     |
| Z   | -      | 0.080 | -           | 2.04  |

# LM2931 Series

## OUTLINE DIMENSIONS

### TH SUFFIX PLASTIC PACKAGE CASE 314A-03 (TO-220 Type) ISSUE D

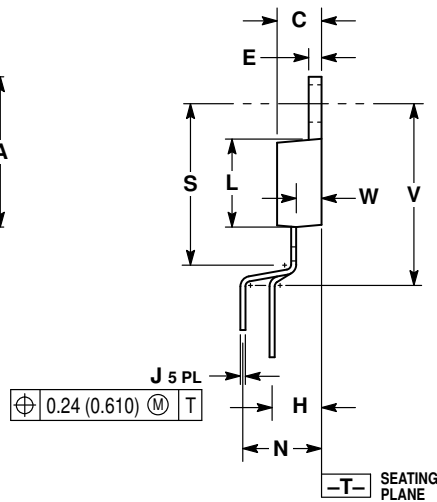
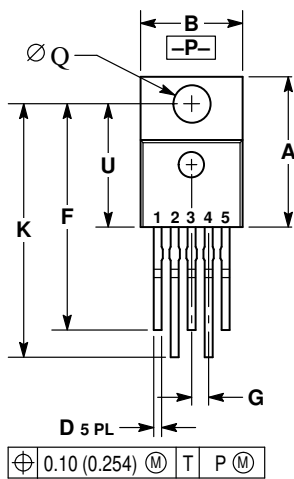


NOTES:

1. DIMENSIONING AND TOLERANCING PER ANSI Y14.5M, 1982.
2. CONTROLLING DIMENSION: INCH.
3. DIMENSION D DOES NOT INCLUDE INTERCONNECT BAR (DAMBAR) PROTRUSION. DIMENSION D INCLUDING PROTRUSION SHALL NOT EXCEED 0.043 (1.092) MAXIMUM.

| DIM | INCHES    |       | MILLIMETERS |        |
|-----|-----------|-------|-------------|--------|
|     | MIN       | MAX   | MIN         | MAX    |
| A   | 0.572     | 0.613 | 14.529      | 15.570 |
| B   | 0.390     | 0.415 | 9.906       | 10.541 |
| C   | 0.170     | 0.180 | 4.318       | 4.572  |
| D   | 0.025     | 0.038 | 0.635       | 0.965  |
| E   | 0.048     | 0.055 | 1.219       | 1.397  |
| F   | 0.570     | 0.585 | 14.478      | 14.859 |
| G   | 0.067 BSC |       | 1.702 BSC   |        |
| J   | 0.015     | 0.025 | 0.381       | 0.635  |
| K   | 0.730     | 0.745 | 18.542      | 18.923 |
| L   | 0.320     | 0.365 | 8.128       | 9.271  |
| Q   | 0.140     | 0.153 | 3.556       | 3.886  |
| S   | 0.210     | 0.260 | 5.334       | 6.604  |
| U   | 0.468     | 0.505 | 11.888      | 12.827 |

### TV SUFFIX PLASTIC PACKAGE CASE 314B-05 (TO-220 Type) ISSUE J



NOTES:

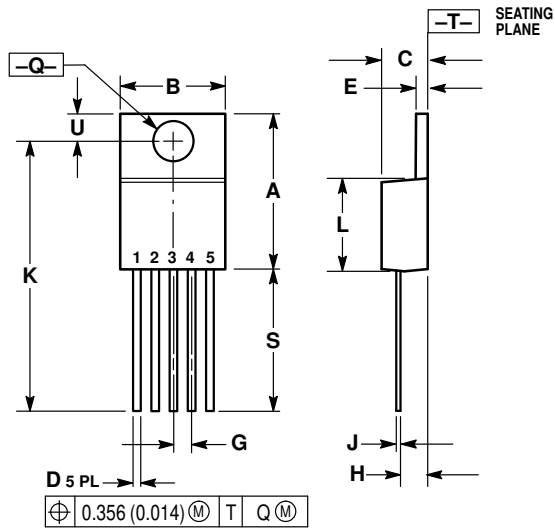
1. DIMENSIONING AND TOLERANCING PER ANSI Y14.5M, 1982.
2. CONTROLLING DIMENSION: INCH.
3. DIMENSION D DOES NOT INCLUDE INTERCONNECT BAR (DAMBAR) PROTRUSION. DIMENSION D INCLUDING PROTRUSION SHALL NOT EXCEED 0.043 (1.092) MAXIMUM.

| DIM | INCHES    |       | MILLIMETERS |        |
|-----|-----------|-------|-------------|--------|
|     | MIN       | MAX   | MIN         | MAX    |
| A   | 0.572     | 0.613 | 14.529      | 15.570 |
| B   | 0.390     | 0.415 | 9.906       | 10.541 |
| C   | 0.170     | 0.180 | 4.318       | 4.572  |
| D   | 0.025     | 0.038 | 0.635       | 0.965  |
| E   | 0.048     | 0.055 | 1.219       | 1.397  |
| F   | 0.850     | 0.935 | 21.590      | 23.749 |
| G   | 0.067 BSC |       | 1.702 BSC   |        |
| H   | 0.166 BSC |       | 4.216 BSC   |        |
| J   | 0.015     | 0.025 | 0.381       | 0.635  |
| K   | 0.900     | 1.100 | 22.860      | 27.940 |
| L   | 0.320     | 0.365 | 8.128       | 9.271  |
| N   | 0.320 BSC |       | 8.128 BSC   |        |
| Q   | 0.140     | 0.153 | 3.556       | 3.886  |
| S   | -         | 0.620 | -           | 15.748 |
| U   | 0.468     | 0.505 | 11.888      | 12.827 |
| V   | -         | 0.735 | -           | 18.669 |
| W   | 0.090     | 0.110 | 2.286       | 2.794  |

# LM2931 Series

## OUTLINE DIMENSIONS

### T SUFFIX PLASTIC PACKAGE CASE 314D-03 (TO-220 Type) ISSUE D

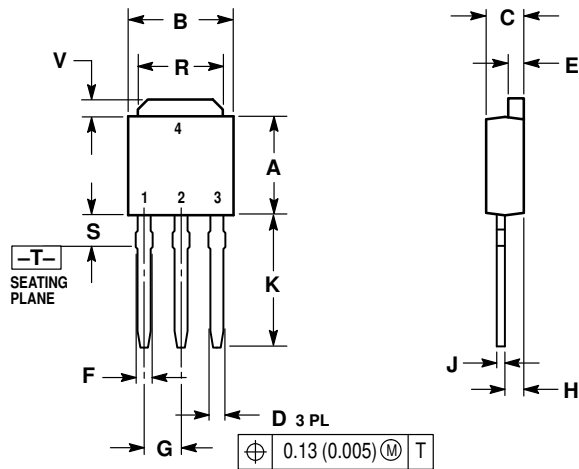


NOTES:

1. DIMENSIONING AND TOLERANCING PER ANSI Y14.5M, 1982.
2. CONTROLLING DIMENSION: INCH.
3. DIMENSION D DOES NOT INCLUDE INTERCONNECT BAR (DAMBAR) PROTRUSION. DIMENSION D INCLUDING PROTRUSION SHALL NOT EXCEED 10.92 (0.043) MAXIMUM.

| DIM | INCHES    |       | MILLIMETERS |        |
|-----|-----------|-------|-------------|--------|
|     | MIN       | MAX   | MIN         | MAX    |
| A   | 0.572     | 0.613 | 14.529      | 15.570 |
| B   | 0.390     | 0.415 | 9.906       | 10.541 |
| C   | 0.170     | 0.180 | 4.318       | 4.572  |
| D   | 0.025     | 0.038 | 0.635       | 0.965  |
| E   | 0.048     | 0.055 | 1.219       | 1.397  |
| G   | 0.067 BSC |       | 1.702 BSC   |        |
| H   | 0.087     | 0.112 | 2.210       | 2.845  |
| J   | 0.015     | 0.025 | 0.381       | 0.635  |
| K   | 1.020     | 1.065 | 25.908      | 27.051 |
| L   | 0.320     | 0.365 | 8.128       | 9.271  |
| Q   | 0.140     | 0.153 | 3.556       | 3.886  |
| U   | 0.105     | 0.117 | 2.667       | 2.972  |
| S   | 0.543     | 0.582 | 13.792      | 14.783 |

### DT-1 SUFFIX PLASTIC PACKAGE CASE 369-07 (DPAK) ISSUE L



NOTES:

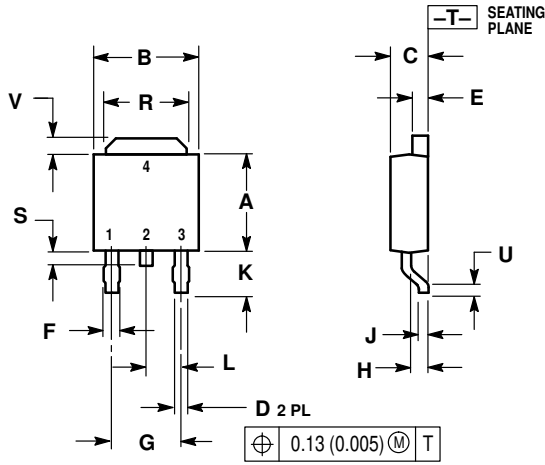
1. DIMENSIONING AND TOLERANCING PER ANSI Y14.5M, 1982.
2. CONTROLLING DIMENSION: INCH.

| DIM | INCHES    |       | MILLIMETERS |      |
|-----|-----------|-------|-------------|------|
|     | MIN       | MAX   | MIN         | MAX  |
| A   | 0.235     | 0.250 | 5.97        | 6.35 |
| B   | 0.250     | 0.265 | 6.35        | 6.73 |
| C   | 0.086     | 0.094 | 2.19        | 2.38 |
| D   | 0.027     | 0.035 | 0.69        | 0.88 |
| E   | 0.033     | 0.040 | 0.84        | 1.01 |
| F   | 0.037     | 0.047 | 0.94        | 1.19 |
| G   | 0.090 BSC |       | 2.29 BSC    |      |
| H   | 0.034     | 0.040 | 0.87        | 1.01 |
| J   | 0.018     | 0.023 | 0.46        | 0.58 |
| K   | 0.350     | 0.380 | 8.89        | 9.65 |
| R   | 0.175     | 0.215 | 4.45        | 5.46 |
| S   | 0.050     | 0.090 | 1.27        | 2.28 |
| V   | 0.030     | 0.050 | 0.77        | 1.27 |

# LM2931 Series

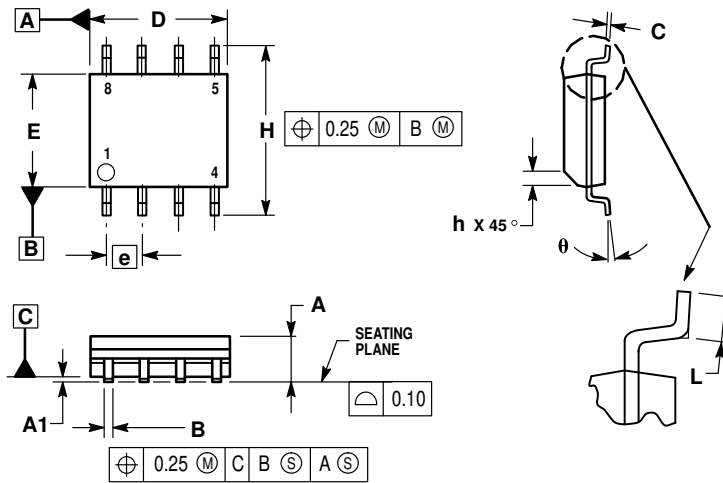
## OUTLINE DIMENSIONS

### DT SUFFIX PLASTIC PACKAGE CASE 369A-13 (DPAK) ISSUE Y



| DIM | INCHES    |       | MILLIMETERS |      |
|-----|-----------|-------|-------------|------|
|     | MIN       | MAX   | MIN         | MAX  |
| A   | 0.235     | 0.250 | 5.97        | 6.35 |
| B   | 0.250     | 0.265 | 6.35        | 6.73 |
| C   | 0.086     | 0.094 | 2.19        | 2.38 |
| D   | 0.027     | 0.035 | 0.69        | 0.88 |
| E   | 0.033     | 0.040 | 0.84        | 1.01 |
| F   | 0.037     | 0.047 | 0.94        | 1.19 |
| G   | 0.180 BSC |       | 4.58 BSC    |      |
| H   | 0.034     | 0.040 | 0.87        | 1.01 |
| J   | 0.018     | 0.023 | 0.46        | 0.58 |
| K   | 0.102     | 0.114 | 2.60        | 2.89 |
| L   | 0.090 BSC |       | 2.29 BSC    |      |
| R   | 0.175     | 0.215 | 4.45        | 5.46 |
| S   | 0.020     | 0.050 | 0.51        | 1.27 |
| U   | 0.020     |       | 0.51        |      |
| V   | 0.030     | 0.050 | 0.77        | 1.27 |
| Z   | 0.138     | —     | 3.51        | —    |

### D SUFFIX PLASTIC PACKAGE CASE 751-05 (SOP-8) ISSUE S



#### NOTES:

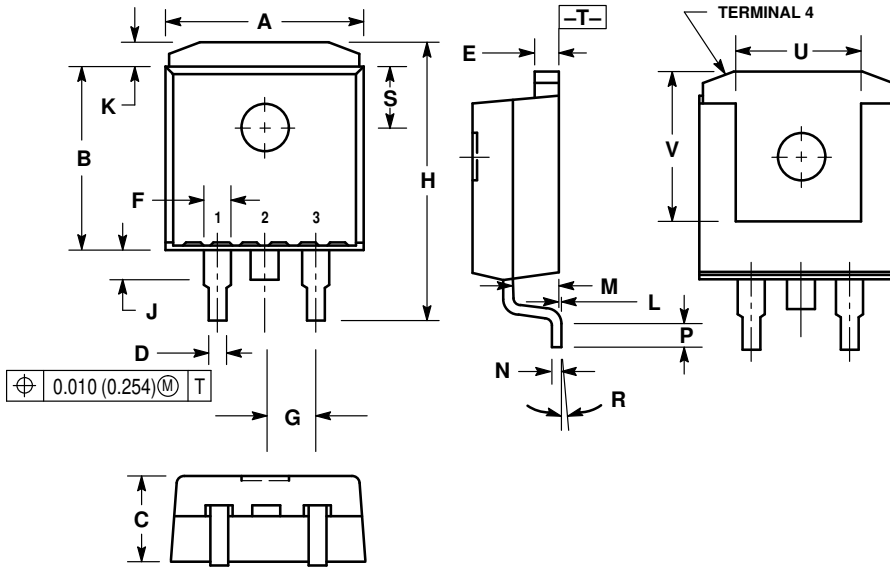
1. DIMENSIONING AND TOLERANCING PER ASME Y14.5M, 1994.
2. DIMENSIONS ARE IN MILLIMETERS.
3. DIMENSION D AND E DO NOT INCLUDE MOLD PROTRUSION.
4. MAXIMUM MOLD PROTRUSION 0.15 PER SIDE.
5. DIMENSION B DOES NOT INCLUDE MOLD PROTRUSION. ALLOWABLE DAMBAR PROTRUSION SHALL BE 0.127 TOTAL IN EXCESS OF THE B DIMENSION AT MAXIMUM MATERIAL CONDITION.

| DIM      | MILLIMETERS |      |
|----------|-------------|------|
|          | MIN         | MAX  |
| A        | 1.35        | 1.75 |
| A1       | 0.10        | 0.25 |
| B        | 0.35        | 0.49 |
| C        | 0.18        | 0.25 |
| D        | 4.80        | 5.00 |
| E        | 3.80        | 4.00 |
| e        | 1.27 BSC    |      |
| H        | 5.80        | 6.20 |
| h        | 0.25        | 0.50 |
| L        | 0.40        | 1.25 |
| $\theta$ | 0°          | 7°   |

# LM2931 Series

## OUTLINE DIMENSIONS

### D2T SUFFIX PLASTIC PACKAGE CASE 936-03 (D<sup>2</sup>PAK) ISSUE B

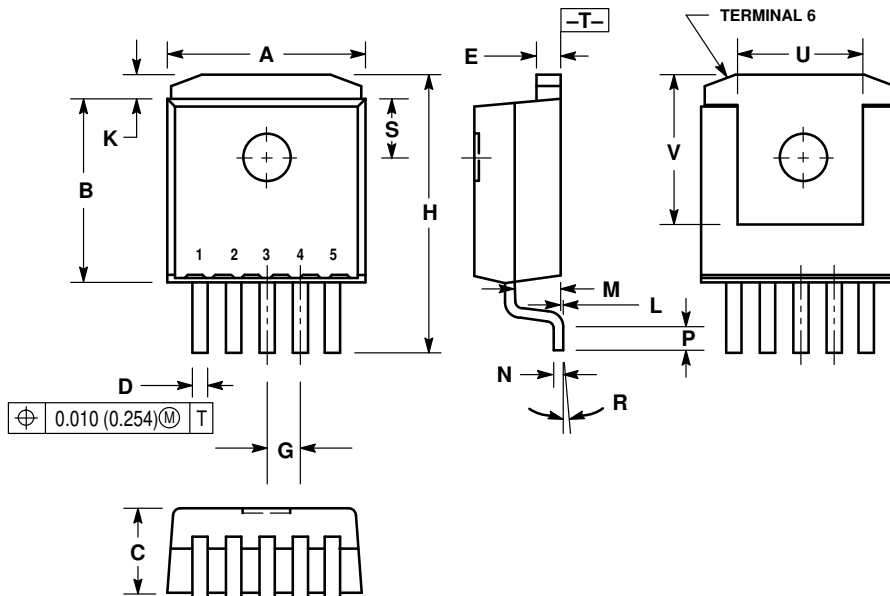


NOTES:

- 1 DIMENSIONING AND TOLERANCING PER ANSI Y14.5M, 1982.
- 2 CONTROLLING DIMENSION: INCH.
- 3 TAB CONTOUR OPTIONAL WITHIN DIMENSIONS A AND K.
- 4 DIMENSIONS U AND V ESTABLISH A MINIMUM MOUNTING SURFACE FOR TERMINAL 4.
- 5 DIMENSIONS A AND B DO NOT INCLUDE MOLD FLASH OR GATE PROTRUSIONS. MOLD FLASH AND GATE PROTRUSIONS NOT TO EXCEED 0.025 (0.635) MAXIMUM.

| DIM | INCHES    |       | MILLIMETERS |        |
|-----|-----------|-------|-------------|--------|
|     | MIN       | MAX   | MIN         | MAX    |
| A   | 0.386     | 0.403 | 9.804       | 10.236 |
| B   | 0.356     | 0.368 | 9.042       | 9.347  |
| C   | 0.170     | 0.180 | 4.318       | 4.572  |
| D   | 0.026     | 0.036 | 0.660       | 0.914  |
| E   | 0.045     | 0.055 | 1.143       | 1.397  |
| F   | 0.051 REF |       | 1.295 REF   |        |
| G   | 0.100 BSC |       | 2.540 BSC   |        |
| H   | 0.539     | 0.579 | 13.691      | 14.707 |
| J   | 0.125 MAX |       | 3.175 MAX   |        |
| K   | 0.050 REF |       | 1.270 REF   |        |
| L   | 0.000     | 0.010 | 0.000       | 0.254  |
| M   | 0.088     | 0.102 | 2.235       | 2.591  |
| N   | 0.018     | 0.026 | 0.457       | 0.660  |
| P   | 0.058     | 0.078 | 1.473       | 1.981  |
| R   | 5° REF    |       | 5° REF      |        |
| S   | 0.116 REF |       | 2.946 REF   |        |
| U   | 0.200 MIN |       | 5.080 MIN   |        |
| V   | 0.250 MIN |       | 6.350 MIN   |        |

### D2T SUFFIX PLASTIC PACKAGE CASE 936A-02 (D<sup>2</sup>PAK) ISSUE A




NOTES:

- 6 DIMENSIONING AND TOLERANCING PER ANSI Y14.5M, 1982.
- 7 CONTROLLING DIMENSION: INCH.
- 8 TAB CONTOUR OPTIONAL WITHIN DIMENSIONS A AND K.
- 9 DIMENSIONS U AND V ESTABLISH A MINIMUM MOUNTING SURFACE FOR TERMINAL 6.
- 10 DIMENSIONS A AND B DO NOT INCLUDE MOLD FLASH OR GATE PROTRUSIONS. MOLD FLASH AND GATE PROTRUSIONS NOT TO EXCEED 0.025 (0.635) MAXIMUM.

| DIM | INCHES    |       | MILLIMETERS |        |
|-----|-----------|-------|-------------|--------|
|     | MIN       | MAX   | MIN         | MAX    |
| A   | 0.386     | 0.403 | 9.804       | 10.236 |
| B   | 0.356     | 0.368 | 9.042       | 9.347  |
| C   | 0.170     | 0.180 | 4.318       | 4.572  |
| D   | 0.026     | 0.036 | 0.660       | 0.914  |
| E   | 0.045     | 0.055 | 1.143       | 1.397  |
| G   | 0.067 BSC |       | 1.702 BSC   |        |
| H   | 0.539     | 0.579 | 13.691      | 14.707 |
| K   | 0.050 REF |       | 1.270 REF   |        |
| L   | 0.000     | 0.010 | 0.000       | 0.254  |
| M   | 0.088     | 0.102 | 2.235       | 2.591  |
| N   | 0.018     | 0.026 | 0.457       | 0.660  |
| P   | 0.058     | 0.078 | 1.473       | 1.981  |
| R   | 5° REF    |       | 5° REF      |        |
| S   | 0.116 REF |       | 2.946 REF   |        |
| U   | 0.200 MIN |       | 5.080 MIN   |        |
| V   | 0.250 MIN |       | 6.350 MIN   |        |

# LM2931 Series

Motorola reserves the right to make changes without further notice to any products herein. Motorola makes no warranty, representation or guarantee regarding the suitability of its products for any particular purpose, nor does Motorola assume any liability arising out of the application or use of any product or circuit, and specifically disclaims any and all liability, including without limitation consequential or incidental damages. "Typical" parameters which may be provided in Motorola data sheets and/or specifications can and do vary in different applications and actual performance may vary over time. All operating parameters, including "Typicals" must be validated for each customer application by customer's technical experts. Motorola does not convey any license under its patent rights nor the rights of others. Motorola products are not designed, intended, or authorized for use as components in systems intended for surgical implant into the body, or other applications intended to support or sustain life, or for any other application in which the failure of the Motorola product could create a situation where personal injury or death may occur. Should Buyer purchase or use Motorola products for any such unintended or unauthorized application, Buyer shall indemnify and hold Motorola and its officers, employees, subsidiaries, affiliates, and distributors harmless against all claims, costs, damages, and expenses, and reasonable attorney fees arising out of, directly or indirectly, any claim of personal injury or death associated with such unintended or unauthorized use, even if such claim alleges that Motorola was negligent regarding the design or manufacture of the part. Motorola and  are registered trademarks of Motorola, Inc. Motorola, Inc. is an Equal Opportunity/Affirmative Action Employer.

Mfax is a trademark of Motorola, Inc.

**How to reach us:**

**USA / EUROPE / Locations Not Listed:** Motorola Literature Distribution;  
P.O. Box 5405, Denver, Colorado 80217. 303-675-2140 or 1-800-441-2447

**JAPAN:** Nippon Motorola Ltd.: SPD, Strategic Planning Office, 4-32-1,  
Nishi-Gotanda, Shinagawa-ku, Tokyo 141, Japan. 81-3-5487-8488

**Mfax™:** RMFAX0@email.sps.mot.com – TOUCHTONE 602-244-6609  
– US & Canada ONLY 1-800-774-1848

**ASIA/PACIFIC:** Motorola Semiconductors H.K. Ltd.; 8B Tai Ping Industrial Park,  
51 Ting Kok Road, Tai Po, N.T., Hong Kong. 852-26629298

**INTERNET:** <http://motorola.com/sps>





This datasheet has been download from:

[www.datasheetcatalog.com](http://www.datasheetcatalog.com)

Datasheets for electronics components.