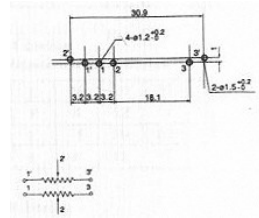
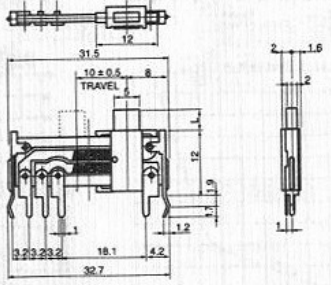
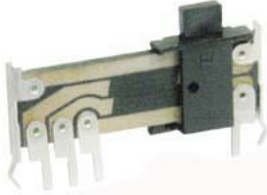


SLIDE POTENTIOMETER

Q-4525

F-102G

10mm, Stand Type, Dual Unit



SPECIFICATIONS

Electrical Characteristics

- Total Resistance500Ω-1 MΩ
- Total Resistance Tolerance..... ±20%
- Resistance Taper..... A, B, C, D, See P109
- Sliding NoiseLess than 100 mV at 20 mm/sec.
- Insulation ResistanceMore than 10 MΩ at DC 250V
- Withstand Voltage1 minute at AC 250 V
- Residual Resistance.....Term. 1 ~2 : Less than 10 Ω
Term. 2 ~3 : Less than 10Ω
- Gang Error (Dual Unit).....-40 dB ~ 0 dB± 3 dB
- Rated Voltage
- Linear Taper B10 mm, 15mm : AC 100V
20 mm, 25mm :AC 200V 30 mm : AC 250V
- OtherTapers10 mm, 15mm : AC 50V
20 mm, 25mm :AC 150V 30 mm : AC 200V
- Rated Power (Single Unit/Dual Unit)
- Linear Taper B10 mm, 15mm : 0.05 W / 0.025 W
20 mm, 25mm :0.1 W/0.05 W
30 mm:0.2W/0.1 W
- OtherTapers.....10 mm, 15mm : 0.025 W/0.012 W
20 mm, 25mm : 0.05 W / 0.025 W
30 mm :0.1 W / 0.05 W

Mechanical Characteristics

- Operating Force 5 gt.cm - 200 gt.cm
- Center Detent Force 10 gt.cm -400 gt.cm
- Stopper Strength.....3.0 Kgf/cm Min
(from the base level to a point of 2 mm)
- Level Wobble.....2(2xL) /20 mm Max.
(L: Level length both sides)
- Level Push-Pull Strength.....3.0 Kgf Min. at 5 sec.

Durability

- Rotational Life..... 10,000 Cycles