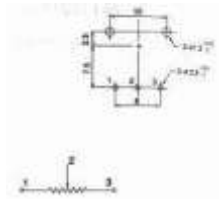
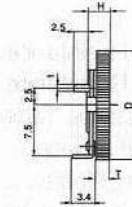
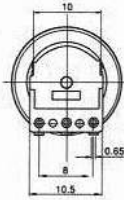


SUPER THIN ROTARY POTENTIOMETER

Q-4545

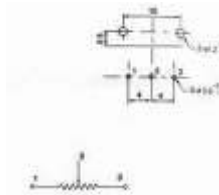
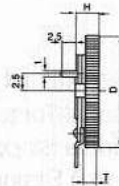
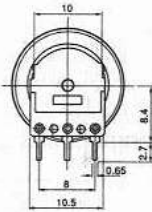
F-1001N

Horizontal Type, Single Unit



F-1001NP

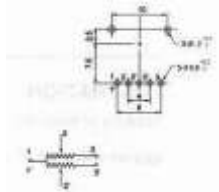
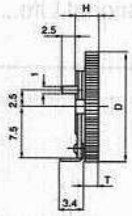
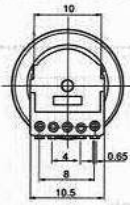
Vertical Type, Single Unit



Q-4544

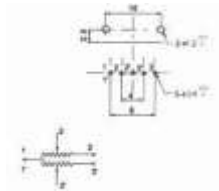
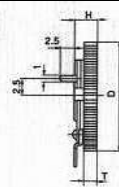
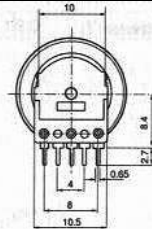
YRV-R1001G22B1

Horizontal Type, Dual Unit



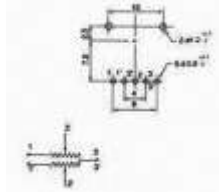
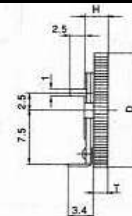
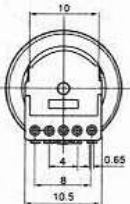
F-1001GP

Vertical Type, Dual Unit



F-1001G-3

Horizontal Type, Dual Unit



SUPER THIN ROTARY POTENTIOMETER

SPECIFICATIONS

Electrical Characteristics

- Resistance 500Ω~1MΩ
- Total Resistance Tolerance..... ±20%
- Resistance Taper.....A,B,C,D See P81
- Max. Operation Voltage..... AC 50V, DC 12V
- Rated Power 0.05W
- Sliding Noise.....Less than 100 mV
- Insulation Resistance More than 100 MΩ at DC 100 V
- Withstand Voltage 1 minute at AC 100 V
- Residual ResistanceTerm.1~2: Less than 20Ω
Term.2~3: Less than 20Ω
- Gang Error(Dual Unit)..... -40 dB ~ 0 dB ± 3dB

Mechanical Characteristics

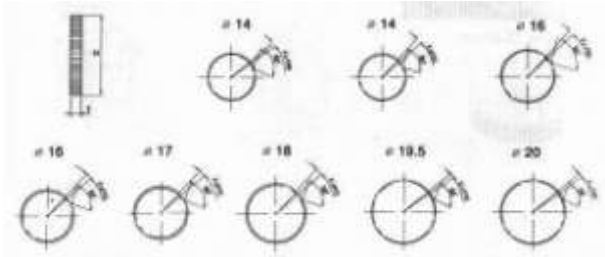
- Total Rotational Angle 270°± 5°
- Rotational Torque 10gf.cm~150 gf.cm
- Rotational Stopper Strength0.8 Kg.f.cm Min.
- Push-Pull Strength Push:0.5Kg.f Min
Pull:0.2Kg.f Min

Durability

- Rotational Life.....10,000 Cycles

KNOB ILLUSTRATION

Standard Dimensions of Knob for F-1001 Series.
(Customer designs are welcomed)



Type of Knob (unit mm)

Outside Diameter (D)	Ø14	Ø14	Ø14	Ø16	Ø16	Ø16	Ø16	Ø17	Ø18	Ø18	Ø18	Ø19.5	Ø20	Ø20	Ø20	Ø22
Thickness (T)	1.0	2.0	2.8	1.0	2.0	2.65	2.8	2.8	1.0	2.0	2.8	2.8	2.0	2.2	2.8	2.8
Height(H)	2.4	3.4	4.2	2.4	3.4	4.0	4.2	4.2	2.4	3.4	4.2	4.2	3.4	4.2	4.2	4.2