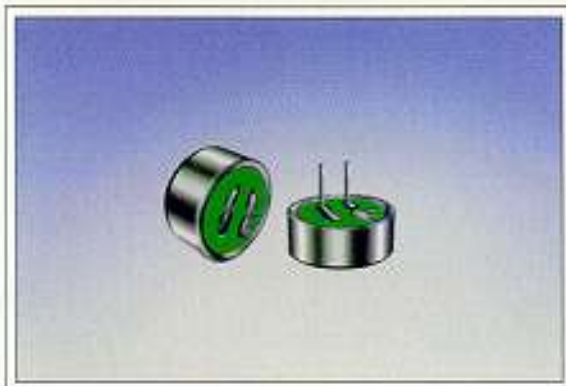
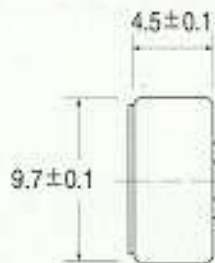


# CMT-45, CMP-45 (9.7 × 4.5) Omnidirectional Foil Electret Condenser Microphone Unit:mm

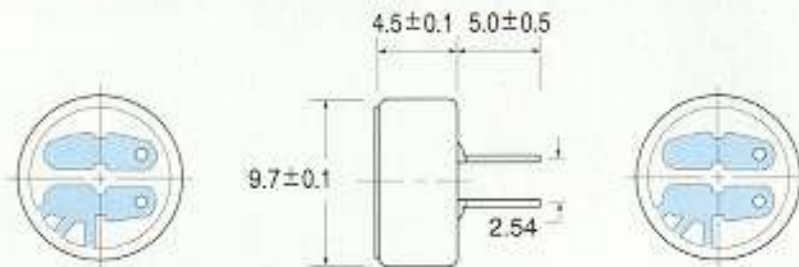


## Dimensions

• Lead Wire Type CMT-45



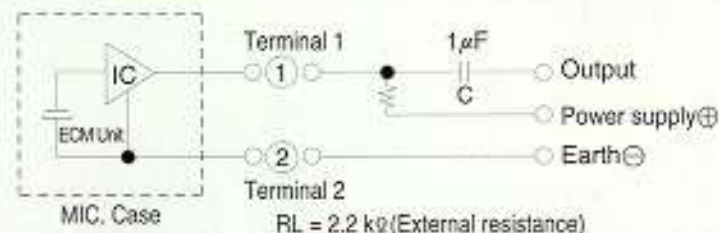
• Pin Type CMP-45



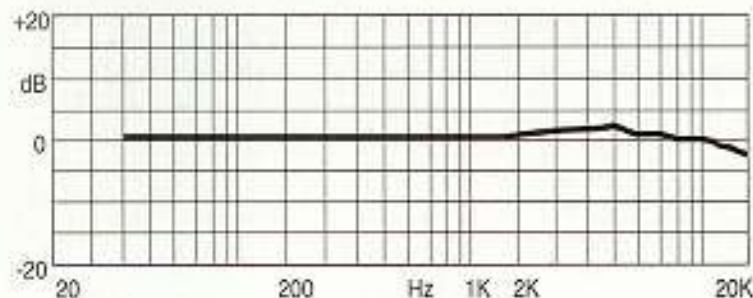
## Specifications

Sensitivity	:See Model No. Table
Impedance	:Max. 2.2 k $\Omega$
Standard power supply	:4.5 V DC
Current consumption	:Max. 0.8 mA
Sensitivity reduction	:Within-3dB at 3.0V
S/N ratio	:More than 60dB
Directivity	:Omnidirectional

## Schematic



## Frequency Response



Sensitivity (0dB=1V/Pa at 1KHz)	Model No. Table	
	Lead Wire Type	Pin Type
-44 ± 2dB	CMT-4544	CMP-4544
-42 ± 2dB	CMT-4542	CMP-4542
-40 ± 2dB	CMT-4540	CMP-4540
-38 ± 2dB	CMT-4538	CMP-4538
-36 ± 2dB	CMT-4536	CMP-4536
-42 ± 3dB	CMT-4542T	CMP-4542T
-40 ± 3dB	CMT-4540T	CMP-4540T