

Series	Model	Diameter (Ømm)	Height (mm)	Rated Voltage (VDC)	Tone Nature	Min. Sound Output	Frequency (Hz)	Terminal *	Page No.
DB-E1418	141S5120	12.0	8.5	12.0	Single	95 AT 30cm	5000	P	43
DB-E328	32S4120	14.0	7.5	12.0	Single	80 AT 10cm	4000	P	37
SL13	SL13S4050	15.4	13.9	5.0	Single	83 AT 10cm	4000	P	45
SL13	SL13S4120	15.4	13.9	12.0	Single	85 AT 10cm	4000	P	45
DB-E218	21S5120	22.0	10.8	12.0	Single	85 AT 30cm	4500	L	34
DB-E248	24S3090	22.5	12.0	9.0	Single	85 AT 30cm	3300	L	34
DB-E248	24S5120	22.5	12.0	12.0	Single	90 AT 30cm	5200	L	34
DB-E268	26S4120	23.0	9.8	12.0	Single	85 AT 30cm	3500	P	35
DB-E948	94S4120	23.0	9.8	12.0	Single	85 AT 30cm	3500	L	39
DB-E268	26S4240	23.0	9.8	24.0	Single	85 AT 30cm	3500	P	35
DB-E238	23S3120AN	23.0	16.0	12.0	Single	85 AT 30cm	2900	P	34
DB-E1528	151S3120	23.0	17.0	12.0	Single	90 AT 30cm	3700	L	44
SL11	SL11S3120	23.0	19.0	12.0	Single	90 AT 30cm	3300	L & P	45
SL11	SL11S3240	23.0	19.0	24.0	Single	90 AT 30cm	3400	L & P	45
SL11	SL11S31100	23.0	19.0	110 (VAC)	Single	75 AT 30cm	3300	L & P	44
SL11	SL11S32200	23.0	19.0	220 (VAC)	Single	75 AT 30cm	3300	L & P	44
DB-E1168	116S3120X	23.5	9.5	12.0	Single	85 AT 10cm	3400	P	40
DB-E1168	116S3120	23.5	9.5	12.0	Single	93 AT 30cm	3400	P	40
DB-E1708	170S3120	26.3	21.7	9.0 / 12.0	Single	95/60CM (9V) 102/60CM (12V)	2800	P	46
DB-E78	7S4120	29.5	24.5	12.0	Single	95 AT 30cm	3500	L	32
DB-E78	7P3120	29.5	24.5	12.0	Pulse	90 AT 30cm	3200	L	32
DB-E78	7D3120	29.5	24.5	12.0	Dual	95 / 90 AT 30cm	3200	L	32
DB-E78	7S4240	29.5	24.5	24.0	Single	95 AT 30cm	3500	L	32
DB-E898	89S4030	30.0	19.5	3.0	Single	90 AT 30cm	3500	P	38
DB-E898	89S4120	30.0	19.5	12.0	Single	90 AT 30cm	3500	P	39
DB-E278	27S3120	30.2	14.7	12.0	Single	90 AT 30cm	2700	P	35
DB-E1428	142S3120	31.2	5.1	12.0	Single	75 AT 30cm	3000	P	44
DB-E858	85S4120	32.0	14.0	12.0	Single	87 AT 30cm	3900	L	38
DB-E1218	121S3120	36.5	22.0	12.0	Single	85 AT 1m	3000	PG	40
DB-E1218	121PF3120	36.5	22.0	12.0	Pulse	85 AT 1m	3000	PG	40
DB-E1218	121DF3120	36.5	26.0	12.0	Single/Pulse	85 AT 1m	3000	PG	41
DB-E1118	111S3060	40.0	20.0	6.0	Single	100 AT 30cm	3200	P	40
DB-E298	29SL3120	41.8	16.0	12.0	Single	96 AT 30cm	2800	L	36
DB-E298	29PN3120	41.8	16.0	12.0	Pulse	90 AT 30cm	2900	L	36
DB-E298	29PF3120	41.8	16.0	12.0	Fast Pulse	90 AT 30cm	2900	L	36
DB-E998	99R3090	42.0	18.0	9.0	Siren	100 AT 30cm	2500	L	39
DB-E108	10S3240	42.0	20.5	24.0	Single	85 AT 30cm	2900	PT	32
DB-E288	28SL3120	43.0	14.0	12.0	Single	100 AT 30cm	2800	P	35
SL12	SL12AS3120	43.0	33.0	12.0	Single	80 AT 30cm	2900	PG	45
SL12	SL12APF3120	43.0	33.0	12.0	Fast Pulse	80 AT 30cm	2900	PG	45
SL12	SL12APN3120	43.0	33.0	12.0	Slow Pulse	80 AT 30cm	2900	PG	45
SL12	SL12ADF3120	43.0	33.0	12.0	Single / Fast Pulse	80 AT 30cm	2900	PG	45
SL12	SL12ADN3120	43.0	33.0	12.0	Single / Slow Pulse	80 AT 30cm	2900	PG	45
SL12	SL12BS3120	43.0	33.0	12.0	Single	80 AT 30cm	2900	PT	45

* L - Leadwire, P - PIN, PT - Plate, PG - Plug

DB-E1408



COLOUR	HOUSING	TERMINAL
BLACK	ABS	LEADWIRE

ELECTRICAL SPECIFICATIONS

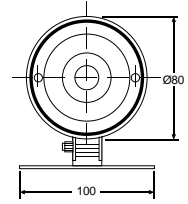
Model No. 140R1120

Operating Voltage (VDC)	6 ~ 12
Rated Voltage (VDC)	12
* Max. Rated Current (mA.)	600
* Min Sound Output (dBA/1m)	112
* Frequency (Hz.)	1500±500
Tone Nature	siren
Operating Temperature (°C)	-20 ~ +60
Weight (gm.)	440

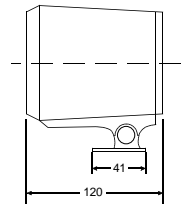
* Value applying at rated voltage

DIMENSION

Top View



Side View



all dimensions are in mm

DB-E1418



COLOUR	HOUSING	TERMINAL
BLACK	PBT	PIN

ELECTRICAL SPECIFICATIONS

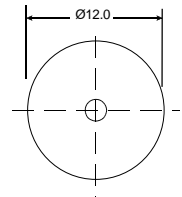
Model No. 141S5120

Operating Voltage (VDC)	2.5 ~ 15
Rated Voltage (VDC)	12
* Max. Rated Current (mA.)	8
* Min Sound Output (dBA/10cm)	85
* Frequency (Hz.)	5000 ± 500
Tone Nature	single
Operating Temperature (°C)	-20 ~ +70
Weight (gm.)	4

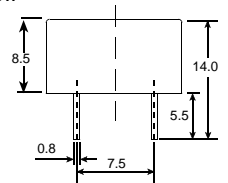
* Value applying at rated voltage

DIMENSION

Top View



Side View



all dimensions are in mm

DB-E1428



COLOUR	HOUSING	TERMINAL
BLACK	PBT	PIN

ELECTRICAL SPECIFICATIONS

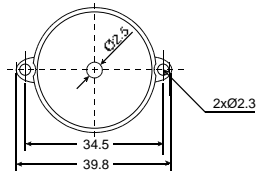
Model No. 142S3120

Operating Voltage (VDC)	2.5 ~ 15
Rated Voltage (VDC)	12
* Max. Rated Current (mA.)	8
* Min Sound Output (dBA/30cm)	75
* Frequency (Hz.)	3000±500
Tone Nature	single
Operating Temperature (°C)	-20 ~ +60
Weight (gm.)	6

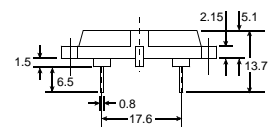
* Value applying at rated voltage

DIMENSION

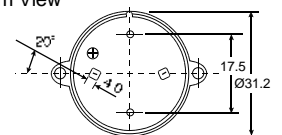
Top View



Side View



Bottom View



all dimensions are in mm