

规格书编号

SPEC NO :

产品规格书

SPECIFICATION

CUSTOMER 客户: _____

PRODUCT 产品: _____ SAW FILTER _____

MODEL NO 型号: _____ HDF868.35M-S3 _____

MARKING 印字: _____ HDF801 _____

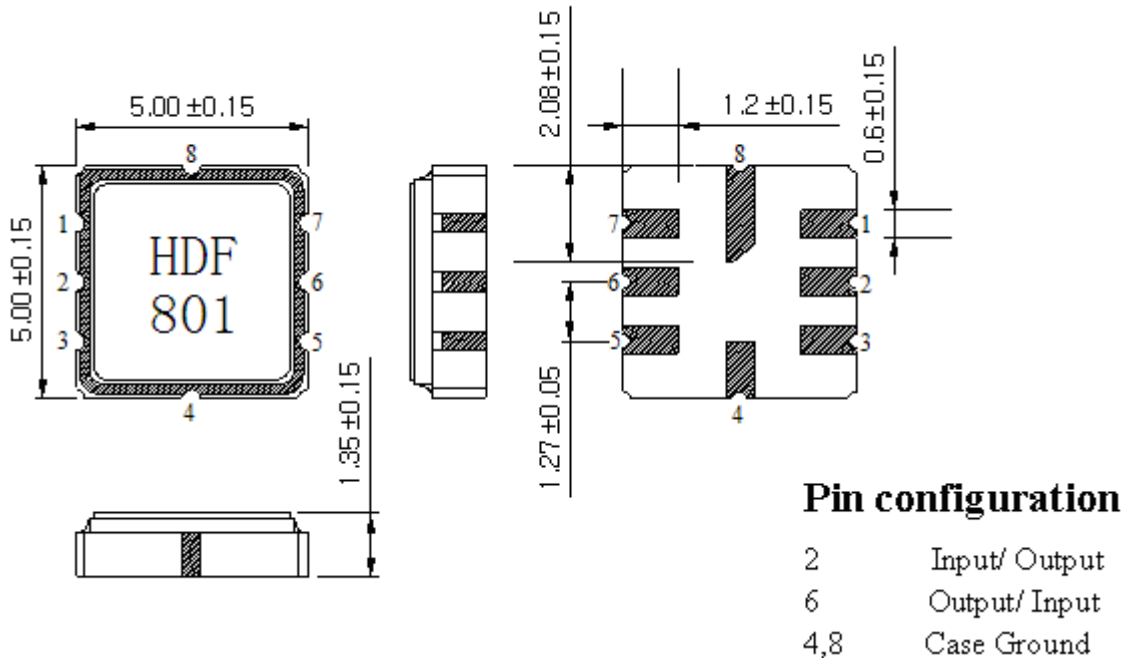
PREPARED 编制: _____ CHECKED 审核: _____

APPROVED 批准: _____ D A T E 日期: _____ 2006-12-18 _____

客户确认 CUSTOMER RECEIVED:		
审核 CHECKED	批准 APPROVED	日期 DATE

无锡市好达电子有限公司
Shoulder Electronics Limited

1. Package



2. Marking

HDF801

HD: Brand
 F: Filter
 801: No.

3. Performance

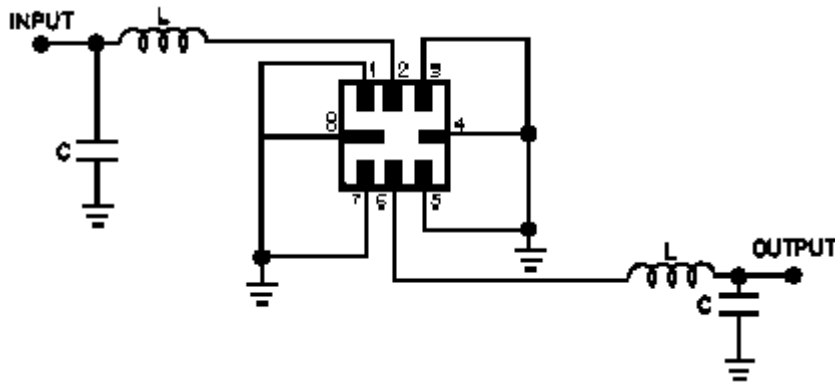
3.1 Absolute Maximum Ratings

Rating	Value	Units
Incident RF Power	+13	dBm
DC Voltage Between Any	±30	VDC
Case Temperature	-40 to +85	°C

3.2 Electrical Characteristics

Characteristic		Sym	Min.	Typical	Max.	Units
Center Frequency (+25°C)		f_c		868.35		MHz
Insertion Loss		IL		4.5	6.0	dB
3dB Bandwidth		BW_3		1.2	1.5	MHz
Passband Ripple					± 1.0	dB
Temperature Stability	Turnover Temperature	T_0	15	25	40	°C
	Turnover Frequency	f_o		f_c		MHz
	Frequency Temperature Coefficient	FTC		0.032		ppm/°C ²
Frequency Aging Absolute Value during the First Year		fA		$< \pm 10$		ppm/yr
Rejection	at $f_c - 21.4\text{MHz}$ (Image)		30	40		dB
	at $f_c - 10.7\text{MHz}$ (LO)		15	30		
	Ultimate			60		

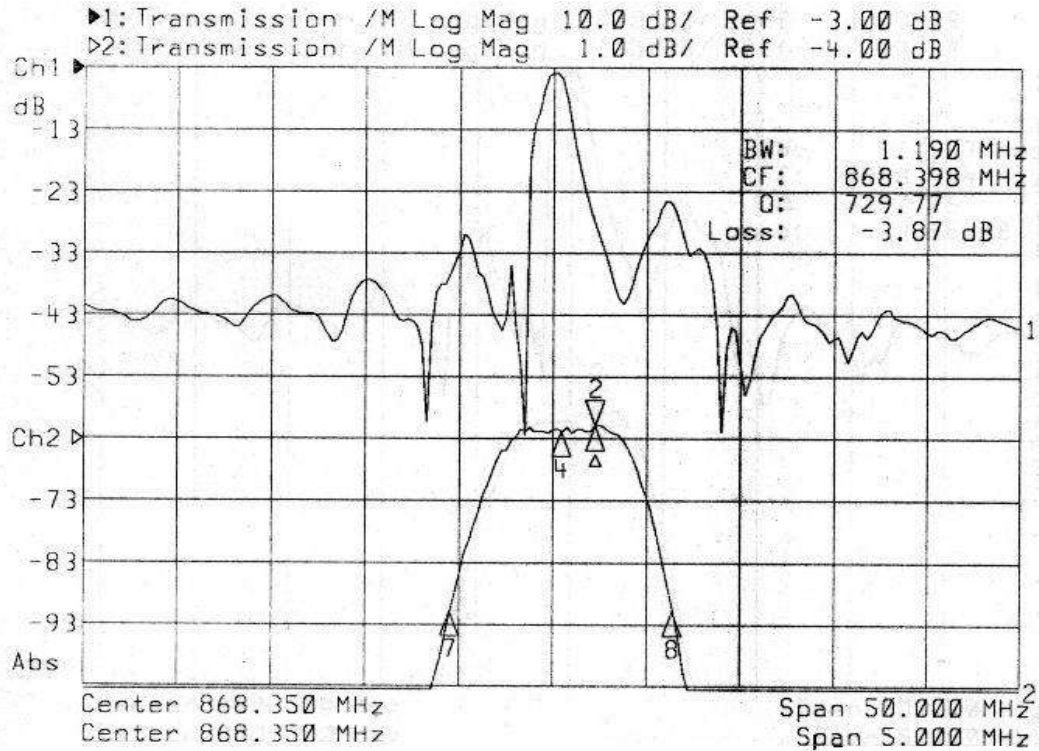
4. Test Circuit



$L = 20\text{nH}^*$

$C = 4\text{pF}^*$

5. Typical Frequency Response



6. Packing

6.1 Dimensions

(1) Carrier Tape: Figure 1

(2) Reel: Figure 2

(3) The product shall be packed properly not to be damaged during transportation and storage.

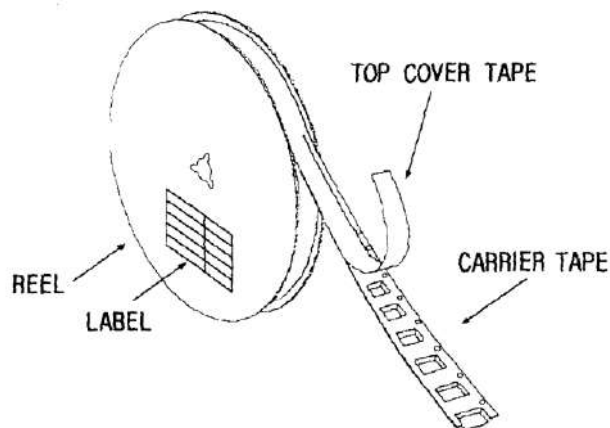
6.2 Reeling Quantity

1000 pcs/reel 7"

3000 pcs/reel 13"

6.3 Taping Structure

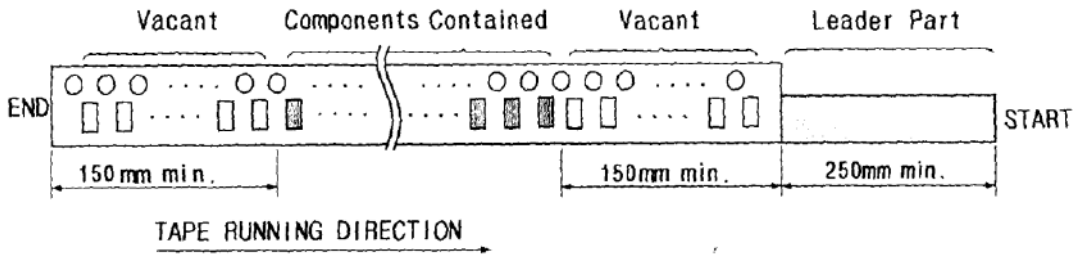
(1) The tape shall be wound around the reel in the direction shown below.



(2) Label

Device Name	
User Product Name	
Quantity	
Lot No.	

(3) Leader part and vacant position specifications.

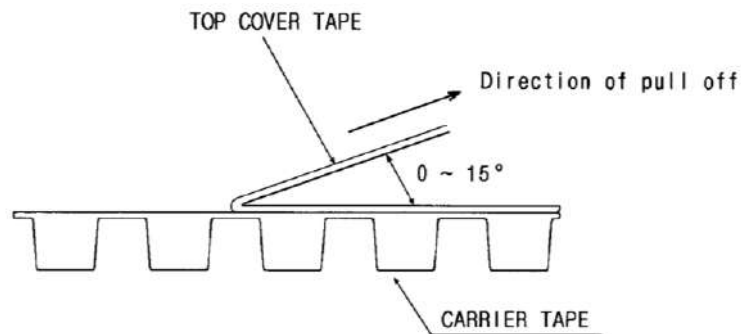


7. TAPE SPECIFICATIONS

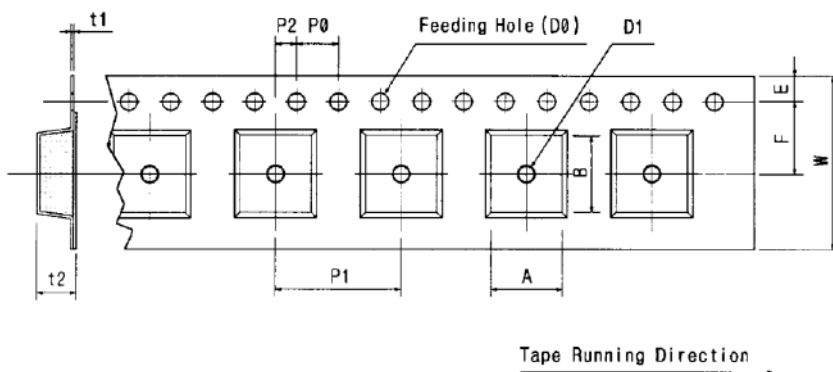
7.1 Tensile Strength of Carrier Tape: 4.4N/mm width

7.2 Top Cover Tape Adhesion (See the below figure)

- (1) pull off angle: 0~15°
- (2) speed: 300mm/min.
- (3) force: 20~70g



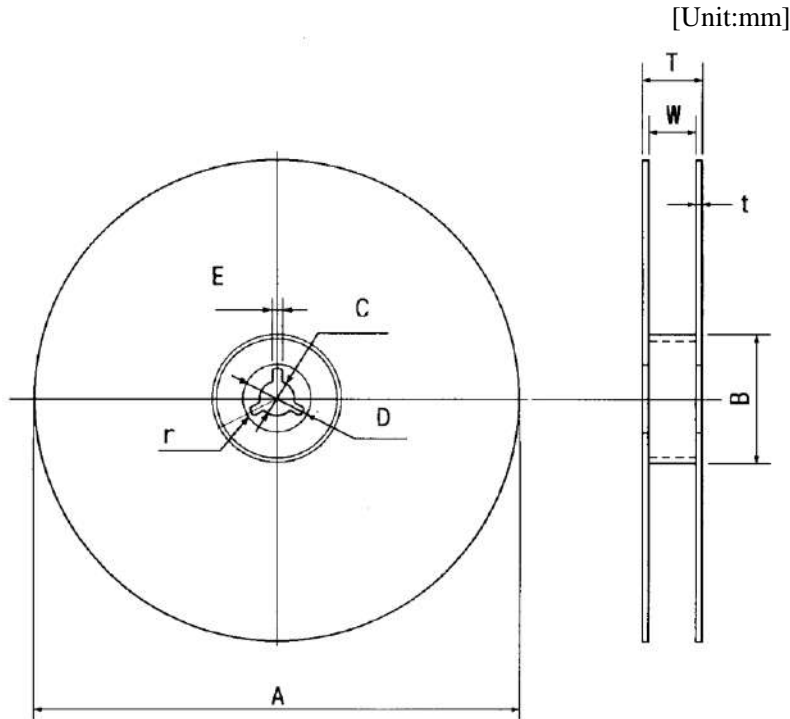
[Figure 1] Carrier Tape Dimensions



[Unit:mm]

W	F	E	P0	P1	P2	D0	D1	t1	t2	A	B
12.0	5.5	1.75	4.0	8.0	2.0	Ø1.5	Ø1.0	0.3	2.10	6.40	5.20
±0.3	±0.05	±0.1	±0.1	±0.1	±0.05	±0.1	±0.25	±0.05	±0.1	±0.1	±0.1

[Figure 2]



A	B	C	D	E	W	t	r
Ø330	Ø100	Ø13	Ø21	2	13	3	1.0
±1.0	±0.5	±0.5	±0.8	±0.5	±0.3	max.	max.