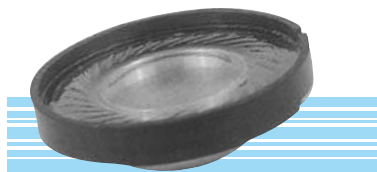
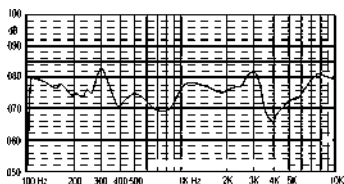


**KPSP2780PN SERIES**

**FREQUENCY RESPONSE**  
*[actual curve of type]*

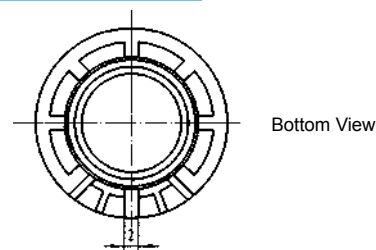


Plastic Frame  
Inner Nd-Fe-B Magnetic

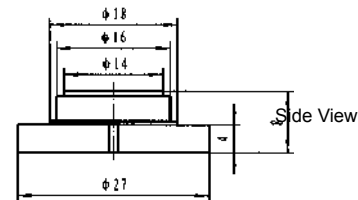
<b>Model No</b>	<b>KPSP2780PN-08 / 0.25B</b>
Impedance	4, 8, 16, 32 (± 15%)
Nom. / Max. Power	0.25W/ 0.5W
Resonant Frequency	750 ± 20% Hz
Frequency Range	f <sub>0</sub> - 5000Hz
Sound Pressure Level	81 ± 3dB /0.1W at 10cm at 1KHz
Magnetic size	12.5 × 2.3mm
Weight	5.5g

\* Value applying at rated voltage

**DIMENSIONS**



Bottom View

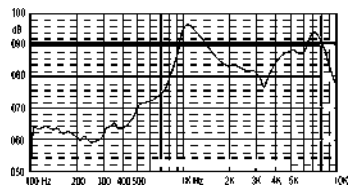


Side View

all dimensions are in mm

**KPSP2855PN SERIES**

**FREQUENCY RESPONSE**  
*[actual curve of type]*

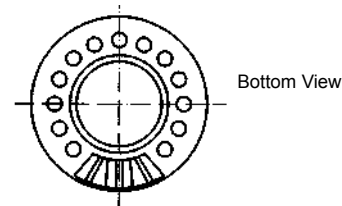


Plastic Frame  
Inner Nd-Fe-B Magnetic

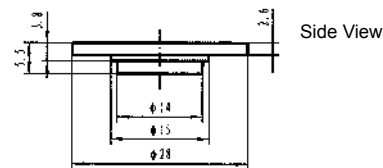
<b>Model No</b>	<b>KPSP2855PN-08 / 0.25A</b>
Impedance	4, 8, 16, 32 (± 15%)
Nom. / Max. Power	0.25W/ 0.5W
Resonant Frequency	700 ± 20% Hz
Frequency Range	f <sub>0</sub> - 4000Hz
Sound Pressure Level	71 ± 3dB /0.1W at 10cm at 1KHz
Magnetic size	12.5 × 1.3mm
Weight	5.5g

\* Value applying at rated voltage

**DIMENSIONS**



Bottom View

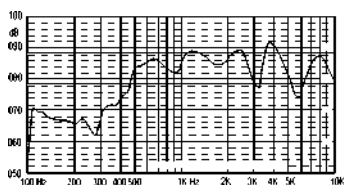


Side View

all dimensions are in mm

**KPSP2950PN SERIES**

**FREQUENCY RESPONSE**  
*[actual curve of type]*

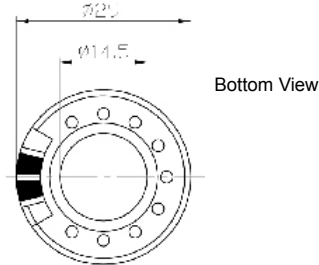


Plastic Frame  
Inner Nd-Fe-B Magnetic

<b>Model No</b>	<b>KPSP2950PN-08 / 0.25A</b>
Impedance	4, 8, 16, 32 (± 15%)
Nom. / Max. Power	0.25W/ 0.5W
Resonant Frequency	600 ± 20% Hz
Frequency Range	f <sub>0</sub> - 10000Hz
Sound Pressure Level	84 ± 3dB /1Vrms at 10cm at 1KHz
Magnetic size	12.5 × 1.3mm
Weight	4.0g

\* Value applying at rated voltage

**DIMENSIONS**



Bottom View



Side View

all dimensions are in mm

The information contained herein is believed to be correct, but no guarantee for accuracy, completeness KEPO Electronics Ltd. reserves the right to make changes without notification.