
	DATE	16-04-08	SPECIFICATION	NINGBO BEST GROUP CO.,LTD
	PAGE	1/7		www.fbele.com
	<i>MODEL NAME: SMT5030</i>			

SPECIFICATION FOR APPROVAL

SMD ELECTRO-MAGNETIC TRANSDUCER

Model Name	SMT5030
Note	

CUSTOMER	BEST
Customer name / Stamp / Sign / Date	DRAWN: 许海
	CHECKED: 李芬
	APPROVED: 宋平

	DATE	16-04-08	SPECIFICATION	NINGBO BEST GROUP CO.,LTD
	PAGE	1/7		www.fbele.com
	MODEL NAME: SMT5030			

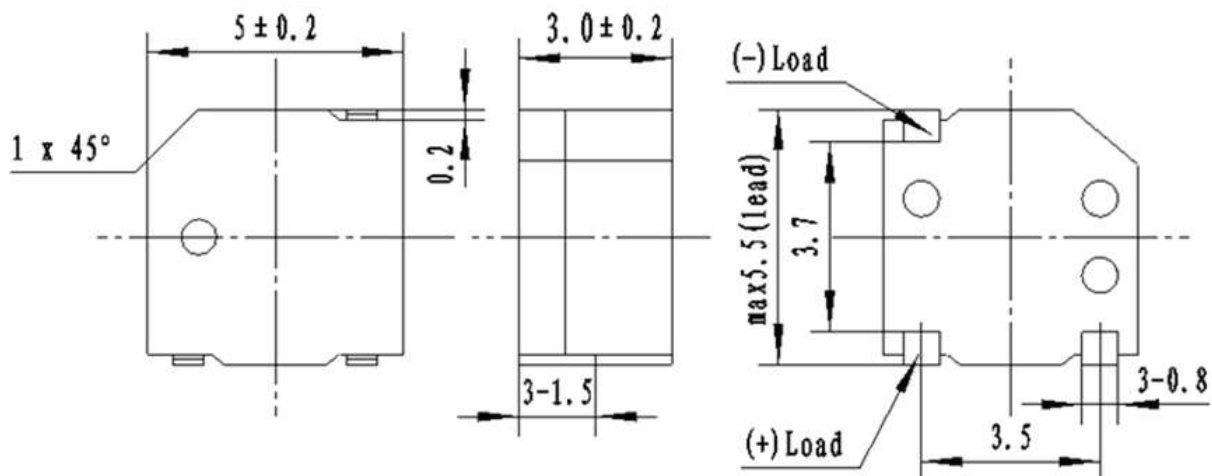
SMT5030
SMD ELECTRO-MAGNETIC TRANSDUCER

1	Model No.	SMT5030
2	Rated Voltage (V)	3
3	Operating Voltage (V)	2~5
4	Resonant Frequency (Hz)	4000
5	Coil Resistance (Ω)	12±2
6	*Sound Output at 10cm (dB)	≥78
7	*Current Consumption (mA)	≤100
8	Operating Temperature (°C)	-20~+70
9	Storage Temperature (°C)	-30~+80
10	Weight (g)	0.3
11	Case material and colour	LCP / Black

*Applying rated voltage (Resonant frequency, 1/2 duty, Square wave)

DIMENSIONS (UNIT: mm)

Tolerance: ±0.5mm Except Specified





DATE 16-04-08

SPECIFICATION

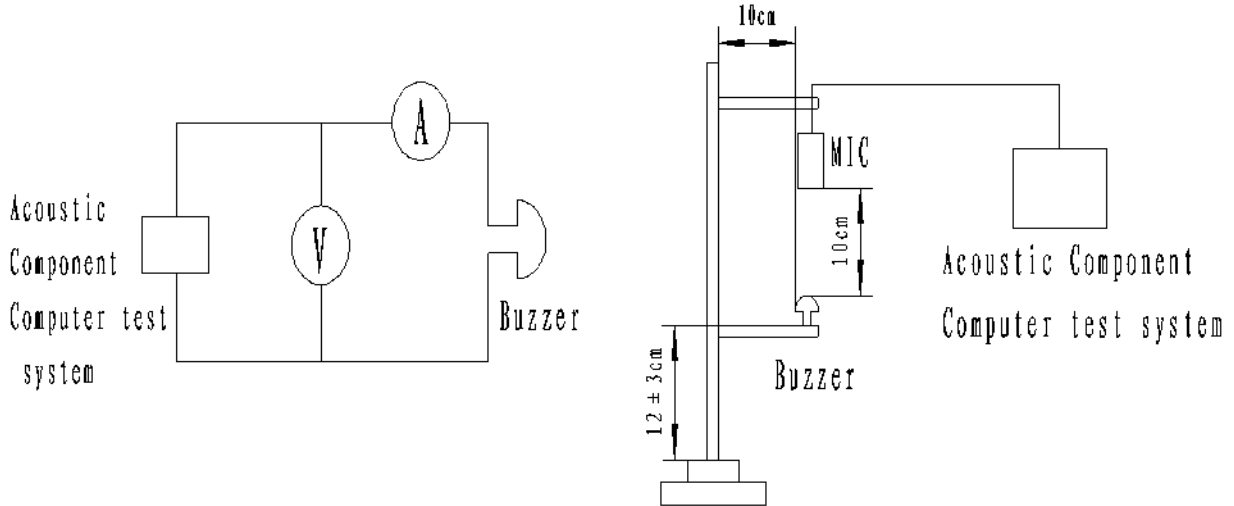
NINGBO BEST GROUP CO.,LTD

PAGE 3/7

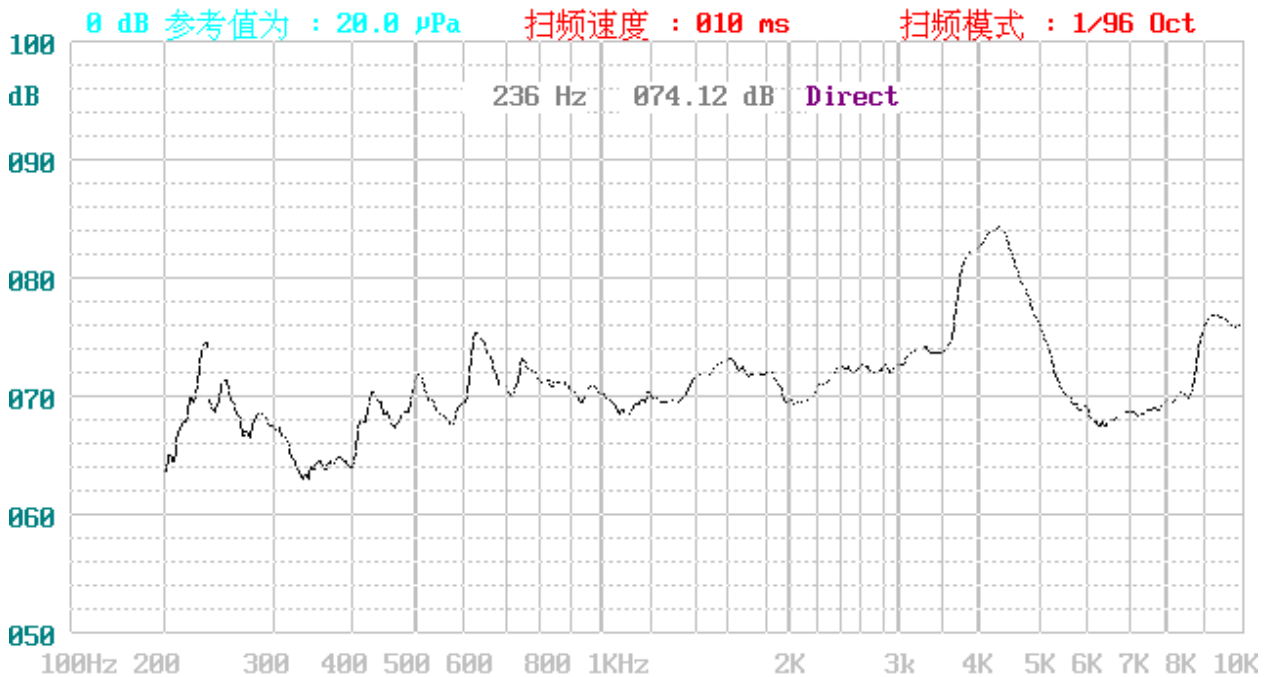
www.fbele.com


MODEL NAME: SMT5030

TEST METHOD:

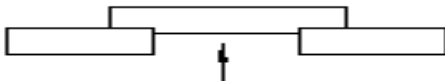


FREQUENCY RESPONSE:



	DATE	16-04-08	SPECIFICATION	NINGBO BEST GROUP CO.,LTD
	PAGE	4/7		www.fbele.com
	<i>MODEL NAME: SMT5030</i>			

RELIABLY TEST:

NO.	ITEM	TESTING CONDITION	VARIANCE AFTER TEST
1	High temp. storage life	The part shall be capable of withstanding a storage temperature is +80°C for 120 hours	After the test the part shall meet specifications without any degradation in appearance and performance except SPL shall be initial value $\pm 10\text{dB}$ or more.
2	Low temp. storage life	The part shall be capable of withstanding a storage temperature is -30°C for 120 hours	
3	Temp. Cycle	Total 5 cycles, 1 cycle consisting of -30 \pm 2°C, 30 minutes 20 \pm 5°C 15 minutes 80 \pm 2°C, 30 minutes 20 \pm 5°C 15 minutes	
4	Humidity Test	40 \pm 2°C, 90~95% RH, 120 hours	
5	Vibration Test	The part shall be subjected to a vibration cycle is 10Hz in a period of 1 minute. Total peak amplitude shall be 1.52mm(9.3g). The vibration test shall consist of 2 hours per plane in each three mutually perpendicular planes for a total time of 6 hours.	
6	Shock	Sounder shall be measured after being applied shock (980m/s ²) for each three mutually perpendicular directions to each of 3 times by half sine wave.	
7	Drop Test	Dropped naturally from 700mm height onto the surface of 10mm thick wooden board. 2 directions-upper and side of the part are to be applied.	
8	Lead pull	The part shall be pushed with a force of 9.8N for 10 \pm 1 seconds behind the part. 	After the test part shall meet specifications without any degradation in appearance and performance.
9	Recommended temp. Profile for Reflow Oven	Shown in Fig.1	



DATE 16-04-08

SPECIFICATION

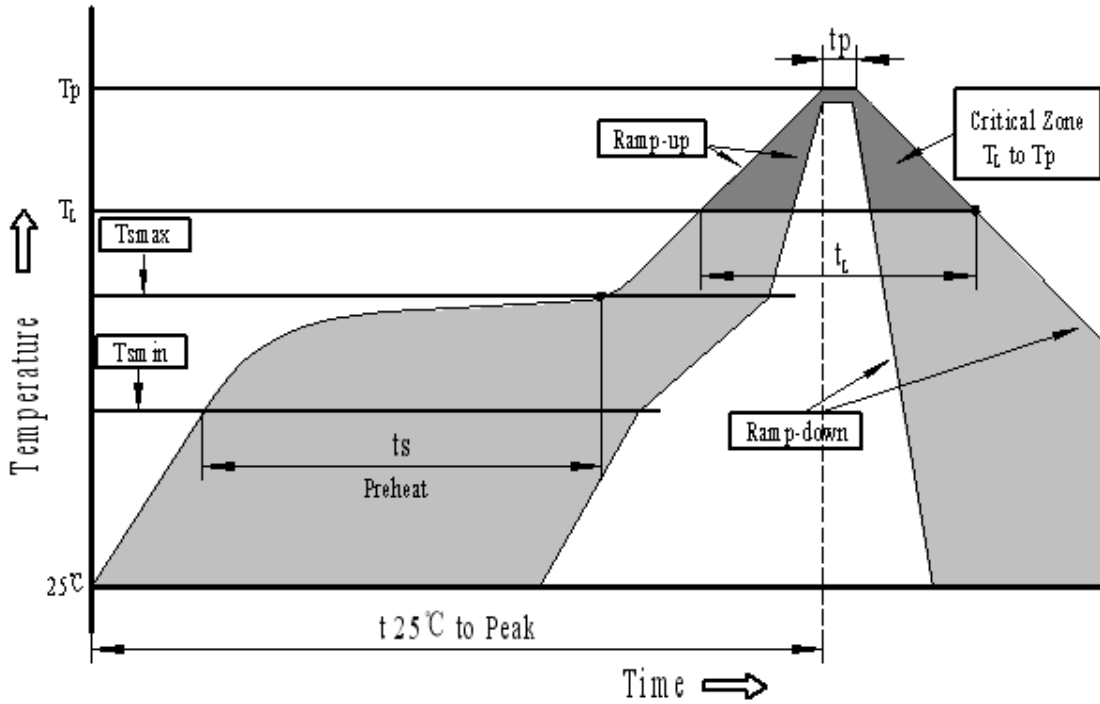
NINGBO BEST GROUP CO.,LTD

PAGE 5/7

www.fbele.com

MODEL NAME: SMT5030

Recommended Temp. Profile for Reflow Oven (Fig.1)



Profile Feature	Pb-Free Assembly
Average ramp-up rate(T_L to T_p)	3°C/second max.
Preheat	
-Temperature Min.(T_{smin})	150°C
-Temperature Min.(T_{smax})	200°C
-Temperature Min.(t_s)	60~180 seconds
T_{smax} to T_L	
-Ramp-up Rate	3°C/second max.
Time maintained above:	
- Temperature(T_L)	217°C
-Time(T_L)	60~150 seconds
Peak temperature(T_p)	250°C+0/-5°C
Time within 5°C of actual Peak temperature (t_p)	6 seconds max.
Ramp-down Rate	6°C/second max.
Time 25°C to Peak Temperature	8 minutes max.



DATE 16-04-08

SPECIFICATION

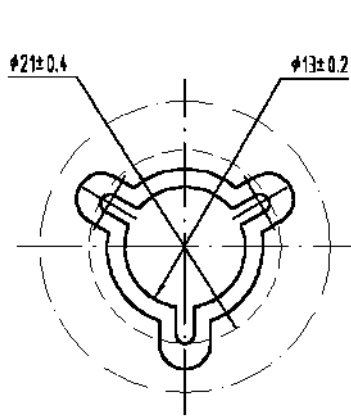
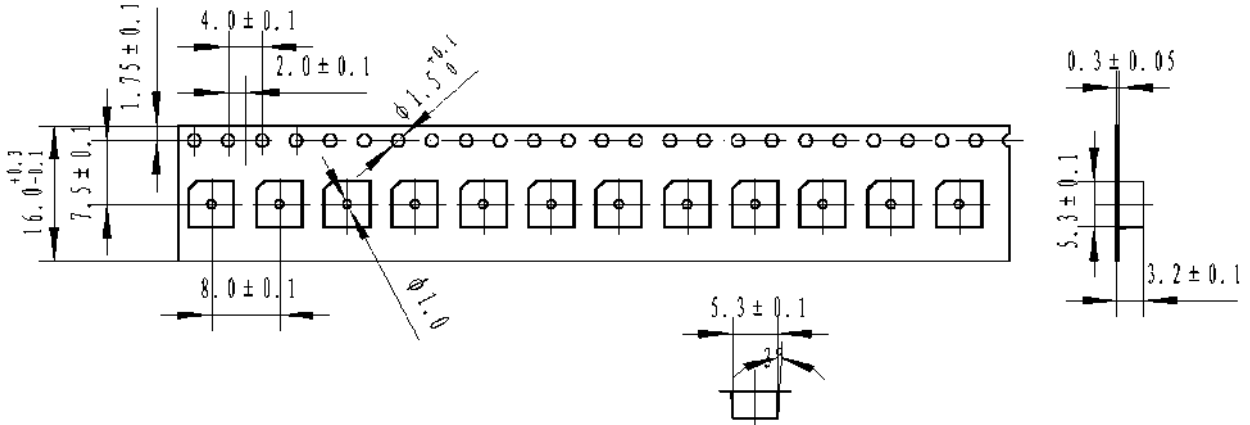
NINGBO BEST GROUP CO.,LTD

PAGE 6/7

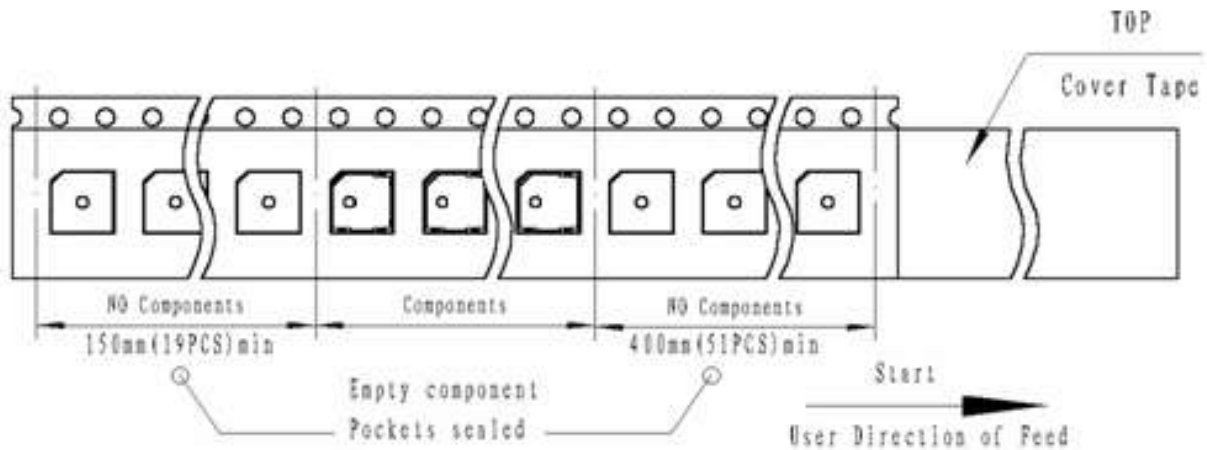
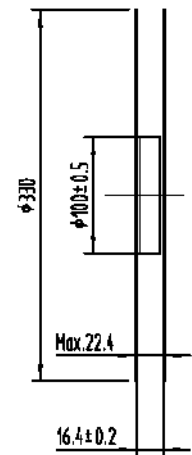
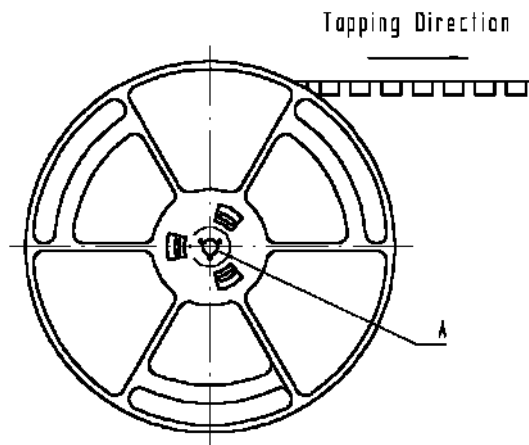
www.fbele.com


MODEL NAME: SMT5030

PACKING:

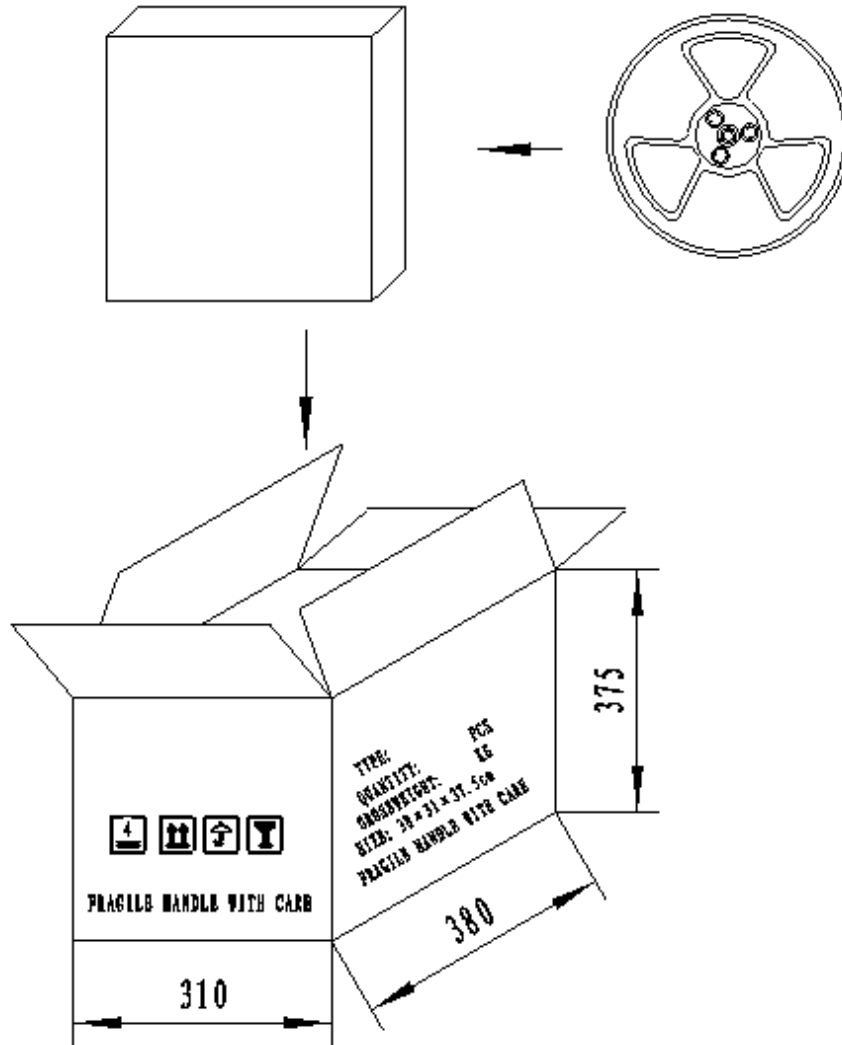


DETAIL: A
SCALE 8:1



	DATE	16-04-08	SPECIFICATION	NINGBO BEST GROUP CO.,LTD
	PAGE	7/7		www.fbele.com
	<i>MODEL NAME: SMT5030</i>			

PACKING:



NOTES:

1. 2500 PCS per box
2. 10 boxes / carton 25000 PCS
3. 4 boxes / carton 10000 PCS
4. 产品保质期:真空包装保证 12 个月