

## SCOPE

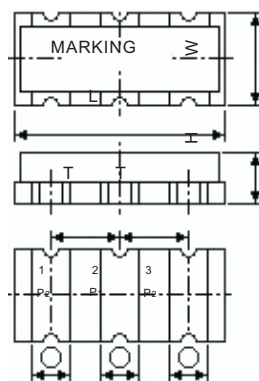
This specification relates to piezoelectric ceramic resonator to be used in a clock generating circuit for microprocessors.



## TECHNICAL CHARACTERISTICS FOR CHIP TYPE

| Part Number | Frequency Range(MHz) | Frequency Accuracy (25°C) | Stability in Temperature (-20~+80°C) | Operating Temperature (°C) | Aging for Ten Years |
|-------------|----------------------|---------------------------|--------------------------------------|----------------------------|---------------------|
| ZTTCC...MG  | 2.00~8.00            | ±0.5%                     | ±0.3%                                | -20~+80                    | ±0.3%               |

## DIMENSIONS AND TEST CIRCUIT FOR MOISIC



① Input ② Ground ③ Output

**Note:** A stands for thickness of the ceramic element, which varies with the frequency.  
The range of the thickness is 0.1 to 0.7mm.

| Code<br>Part Number | Dimensions(mm) |         |         |                |                |         |
|---------------------|----------------|---------|---------|----------------|----------------|---------|
|                     | L              | W       | H       | P <sub>1</sub> | P <sub>2</sub> | T       |
| ZTTCC...MG          | 7.4±0.2        | 3.4±0.2 | 1.8±0.2 | 1.2±0.2        | 1.2±0.2        | 2.5±0.2 |